

ideapad C340 (14" & 15")

BRING YOUR IDEAS TO LIFE.

When inspiration strikes, turn to the powerful yet light Lenovo™ **IdeaPad™** C340. It has an all-day battery and you can use it as a laptop, tablet, and more. For extra privacy, it has a webcam shutter. And you can use a digital pen with it, too—giving you more ways to express yourself.

WHY YOU SHOULD BUY THE LENOVO IDEAPAD C340



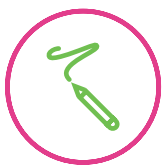
The freedom to get more done

With up to 8 hours of battery life, the **IdeaPad** C340 lets you work, play, and stay in the loop all day, from anywhere. Running low on juice? RapidCharge technology lets you fuel up to 80% battery capacity in just one hour.



Keep your privacy more private

In today's always-on world, online privacy truly matters. That's why the **IdeaPad** C340 has a convenient TrueBlock Privacy Shutter, enabling you to physically close your PC's webcam whenever you're not using it.



Let your creativity flow

Why type when you can write, draw, or sketch directly onto the **IdeaPad** C340's screen? With a digital pen*, you can capture moments of inspiration or take notes on the fly—wherever life takes you.



Extremely versatile, very functional

The **IdeaPad** C340 is designed for you to handle any situation, anywhere. Use it in Laptop mode for everyday computing, Tent mode for sharing things, Stand mode for binge-watching, or Tablet mode for more intuitive interaction.

READY FOR WHATEVER THE DAY BRINGS

Equipped with up to 8th Generation Intel® Core™ i7 processing, the **IdeaPad** C340 is fast, powerful, and responsive—perfect for productivity, creativity, and entertainment. Along with enhanced performance and multitasking, there are more ways to protect yourself while entering passwords and shopping online.

Lenovo™

* Optional on selected models.



WWW.LENOVO.COM



ideapad C340 (14" & 15")

SPECIFICATIONS

Lenovo IdeaPad C340-14IWL*, Lenovo IdeaPad C340-15IWL*

PERFORMANCE

Processor¹

8th Generation Intel® Core™ i7-8565U Processor
8th Generation Intel® Core™ i5-8265U Processor
8th Generation Intel® Core™ i3-8145U Processor
Intel® Pentium® 5405U Processor

Operating System

Windows 10 Home

Graphics

Latest NVIDIA® Graphics (N17S-G0)²

Memory

DDR4, On-board + SO-DIMM

4 GB (4 GB + 0 GB) / 8 GB (4 GB + 4 GB) /
16 GB (16 GB + 0 GB)

Storage

C340-14IWL

PCIe SSD : 128 GB / 256 GB / 512 GB

C340-15IWL

SATA / PCIe SSD: 128 GB / 256 GB / 512 GB

HDD : 500 GB / 1 TB

SSD + HDD : 128 GB + 1 TB / 512 GB + 1 TB

Audio

2 x 2W Dolby Audio™

Battery³

Up to 8 Hours, 52.5 WHr, RapidCharge

DESIGN

Display

C340-14IWL

14" FHD (1920 x 1080) IPS, 250 nits
14" FHD (1920 x 1080) TN, 220 nits
14" HD (1366 x 768) TN, 220 nits

C340-15IWL

15" FHD (1920 x 1080) IPS, 250 nits
15" HD (1366 x 768) TN, 220 nits

Dimensions (W x D x H)

C340-14IWL

(mm) : 328 x 229 x 17.9⁴
(inches): 12.91" x 9.01" x 0.7"

C340-15IWL

(mm) : 364 x 250 x 20.5
(inches): 14.33" x 9.84" x 0.81"

Weight

C340-14IWL

Starting at 3.64 lbs (1.65 kg)

C340-15IWL

Starting at 4.41 lbs (2 kg)

Optional Features

Fingerprint Reader

Active Pen (Supported)

Wow Features

C340-14IWL

Cortana FFV, Dual-Array
Microphone Support, Multi-finger
Touchpad, Slim Camera 720p FF CMOS
with Privacy Shutter

C340-15IWL

Backlit Keyboard, Cortana FFV, Dual-Array
Microphone Support, 65W Power Supply,
Multi-finger Touchpad, Privacy Shutter,
Slim Camera 720p

Colors

C340-14IWL

Abyss Blue
Platinum Grey
Onyx Black

C340-15IWL

Platinum Grey
Onyx Black

CONNECTIVITY

WLAN

2 x 2 WiFi 802.11 ac
1 x 1 WiFi 802.11 ac

Bluetooth®

Bluetooth® 4.2

Input/Output (I/O) Ports

2 x USB 3.1 (Gen 1) Type-A
(1 supports USB charging)
1 x USB 3.1 (Gen 1) Type-C™
Card Reader
HDMI™ 1.4b
3.5 mm Stereo Headphone and
Microphone Combo Audio Jack

PRELOADED SOFTWARE

- Lenovo Utility⁵
- Lenovo Vantage⁶
- LinkedIn⁵
- McAfee LiveSafe™⁶
- Microsoft Office

¹ Processors also available in UC.

² Actual card name is under embargo until Feb 2018.

³ All battery life claims are approximate and based on test results using the MobileMark® 2014 ver 1.5 battery life benchmark test. Actual results will vary, and depend on numerous factors including product configuration and usage, software, operating conditions, wireless functionality, power management settings, screen brightness and other factors. The maximum capacity of the battery will naturally decrease with time and usage. See <https://bapcocom/products/mobilemark-2014/> for additional details.

⁴ As thin as.

⁵ Worldwide (WW).

⁶ ROW Only.

LENOVO SERVICES

Warranty Upgrades - On-site / In-Home Service

Maximizes PC uptime and productivity by providing convenient, fast repair services in your own home.

Accidental Damage Protection

Avoid the hassles of unexpected repair costs. Provides coverage for non-warranted damage incurred under normal operating conditions, such as minor spills, drops or damage to the integrated screen.

Warranty Extensions (1-to-3 Years Total Duration)

This fixed-term, fixed-cost service helps accurately budget for PC expenses, protect your valuable investment and potentially lower the cost of ownership over time.

* Example of Lenovo IdeaPad catalogue naming convention



Intel® platform codes

Apollo Lake: IAP, Broadwell: IBD, Braswell: IBR, Broadwell: IBW, Baytrail: IBY, Cannonlake: ICN, Haswell: IHH, Kabylake: IKB, Skylake H: ISH, Skylake: ISK, Skylake U: ISU, Skylake Y: ISY, Skylake Z: ISZ, Gemini Lake: IGM, Whiskey Lake: IWL



WWW.LENOVO.COM

Lenovo reserves the right to alter product offerings and specifications at any time, without notice. Lenovo makes every effort to ensure accuracy of all information but is not liable or responsible for any editorial, photographic or typographic errors. All images are for illustration purposes only. For full Lenovo product, service and warranty specifications visit www.lenovo.com. Lenovo makes no representations or warranties regarding third party products or services. **Trademarks:** The following are trademarks or registered trademarks of Lenovo: Lenovo, the Lenovo logo, ideapad, IdeaCentre, yoga and yoga home. Microsoft, Windows and Vista are registered trademarks of Microsoft Corporation. Ultrabook, Celeron, Celeron Inside, Core Inside, Intel, Intel Logo, Intel Atom, Intel Atom Inside, Intel Core, Intel Inside, Intel Inside Logo, Intel vPro, Itanium, Itanium Inside, Pentium, Pentium Inside, vPro Inside, Xeon, Xeon Phi, and Xeon Inside are trademarks of Intel Corporation in the U.S. and/or other countries. Other company, product and service names may be trademarks or service marks of others. Visit www.lenovo.com/lenovo/us/en/safecom/ periodically for the latest information on safe and effective computing. ©2019 Lenovo. All rights reserved.



Lenovo™



OPTIONS & ACCESSORIES



Lenovo 520
Wireless Mouse



Lenovo 15.6" Laptop
Urban Backpack B810



Lenovo
Active Pen