

LEGION Y740 (17)

STYLE MEETS SAVAGE.

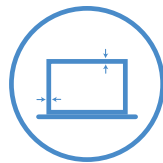
With the latest high-performance hardware from Intel® and NVIDIA® housed in a thin and light, all-aluminum chassis, the 17" Lenovo™ Legion Y740 Laptop is a gaming masterpiece. Featuring best-in-class system lighting from Corsair® iCUE, immersive visuals from Dolby Vision™ and breakthrough moving audio via a Dolby Atmos® - designed soundbar for gaming the Lenovo Legion Y740 Laptop was engineered to deliver the absolute pinnacle of gaming immersion to your eyes and ears.

WHY YOU SHOULD BUY THE LENOVO LEGION Y740 (17)



Gaming reimagined

Weighing in at 2.9 kg light and 21.95 mm thin, all wrapped in an all-aluminum chassis, the Lenovo Legion Y740 Laptop was engineered to break the limits of conventional gaming laptops.



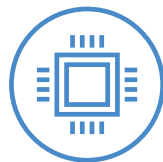
Play without borders

The Y740 laptop's 17" display provides a captivating visual experience, thanks to bezels that are considerably thinner than previous generations. Available in FHD at refresh rates up to 144 Hz, with brightness levels at 300 nits you'll get an amazingly immersive experience from the tear-free video of optional NVIDIA® G-SYNC™ technology and Dolby Vision™ high-dynamic range.



Power from the Outside-In...

The Lenovo Legion Y740 Laptop delivers a best-in-class, full-sized, 100% anti-ghosting, RGB backlit keyboard with Corsair® iCUE lighting effect with over 16 million color combinations and effects.



...And from the Inside-Out

The Lenovo Legion Y740 Laptop comes fully-specified with the latest generation Intel® Core™ processors, NVIDIA® graphics, DDR4 memory and more, all optimally cooled via a re-engineered Lenovo Coldfront cooling system.



WWW.LENOVO.COM



Lenovo™

LEGION Y740 (17)

SPECIFICATIONS

Lenovo Legion Y740-17IRHg*

PERFORMANCE

Processor

9th Generation Intel® Core™ i7-9750H Processor

Operating System

Windows 10 Home

Graphics

NVIDIA® GeForce RTX™ 2080 with Max-Q Design
NVIDIA® GeForce RTX™ 2070 with Max-Q Design
NVIDIA® GeForce RTX™ 2060
NVIDIA® GeForce® GTX 1660 Ti¹

Memory

8 GB/16 GB/32 GB DDR4; 2666 MHz²
Intel® Optane™ Ready³

Storage

128 GB/256 GB/512 GB/1 TB PCIe NVMe SSD +
1 TB/2 TB HDD

Audio

Dolby Atmos® Speaker System for Gaming

Battery

76 WHr, 4 Cells

DESIGN

Display

17.3" FHD (1920 x 1080) IPS
(Dolby Vision™ Enabled / 144 Hz /
72% Color Gamut / 300 nits / NVIDIA® G-Sync™)

Dimensions (W x D x H)

(mm) : 412 x 305 x 21.95 (Front) / 25.45 (Rear)
(inches): 16.22" x 12.01" x 0.86" (Front) / 1" (Rear)

Weight

Up to 6.4 lbs (2.9 kg)

Backlit Keyboard

Corsair® iCUE RGB Backlit Keyboard

Color

Iron Grey



CONNECTIVITY

WLAN & Bluetooth®

Killer™ Wireless-AC⁴ with Bluetooth® 5.0

Input/Output (I/O) Ports

Rear Ports

USB Type-C™ Port
Mini DisplayPort™ 1.4
1 x USB 3.1 Gen 1⁵
1 x USB 3.1 Gen 2⁶
HDMI™ 2.0
Ethernet Port
AC Adapter Port
Kensington® Lock Slot

Left Side Ports

1 x USB Thunderbolt™ 3 Type-C™
3.5 mm Audio Jack

Right Side Port

1 x USB 3.1 Gen 1⁵

PRELOADED SOFTWARE

- Lenovo Vantage
- McAfee® Antivirus
- Corsair® iCUE
- PC Manager⁷
- Lenovo Antivirus Plus⁷
- Magic Y Key⁷

¹ Embargo April 23, 2019.

² With qualified memory set.

³ Supported on NVIDIA® GeForce® GTX 1660Ti only

⁴ Supported.

⁵ The actual transfer speed of the USB 3.1 Gen 1 will vary and, depending on many factors, such as the processing capability of host and peripheral devices, file attributes and other factors related to system configuration and your operating environments, will be slower than a speed of 5 Gbit/s.

⁶ The actual transfer speed of the USB 3.1 Gen 2 will vary and, depending on many factors, such as the processing capability of host and peripheral devices, file attributes and other factors related to system configuration and your operating environments, will be slower than a speed of 10 Gbit/s.

⁷ PRC only.

LENOVO SERVICES

Warranty Upgrades - On-site / In-Home Service

Maximizes PC uptime and productivity by providing convenient, fast repair services in your own home.

Accidental Damage Protection

Avoid the hassles of unexpected repair costs. Provides coverage for non-warranted damage incurred under normal operating conditions, such as minor spills, drops or damage to the integrated screen.

Warranty Extensions

(1-to-3 Years Total Duration)

This fixed-term, fixed-cost service helps accurately budget for PC expenses, protect your valuable investment and potentially lower the cost of ownership over time.

OPTIONS & ACCESSORIES

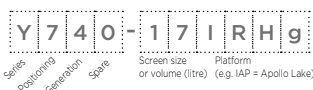


Lenovo Legion
M500 RGB
Gaming Mouse



Lenovo Legion
H300 Gaming
Headset

* Example of Lenovo Legion catalogue naming convention



Intel® platform codes

Haswell H81: IHH, BroadWell U: IBU, Skylake Z170: ISZ, Skylake B150: ISB, Kabylake: IKL, Skylake H110/H170: ISH, Skylake U: ISU, Apollo Lake: IAP, Coffee Lake B360: ICB, Coffee Lake H: ICH, Coffee Lake Z370 Overclock: ICO, Coffee Lake H Refresh: IRH.



WWW.LENOVO.COM

Lenovo reserves the right to alter product offerings and specifications at any time, without notice. Lenovo makes every effort to ensure accuracy of all information but is not liable or responsible for any editorial, photographic or typographic errors. All images are for illustration purposes only. For full Lenovo product, service and warranty specifications visit www.lenovo.com. Lenovo makes no representations or warranties regarding third party products or services. **Trademarks:** The following are trademarks or registered trademarks of Lenovo: Lenovo, the Lenovo logo, ideapad, IdeaCentre, yoga and yoga home. Microsoft, Windows and Vista are registered trademarks of Microsoft Corporation. Ultrabook, Celeron, Celeron Inside, Core Inside, Intel, Intel Logo, Intel Atom, Intel Atom Inside, Intel Core, Intel Inside, Intel Inside Logo, Intel vPro, Itanium, Itanium Inside, Pentium, Pentium Inside, vPro Inside, Xeon, Xeon Phi, and Xeon Inside are trademarks of Intel Corporation in the U.S. and/or other countries. Other company, product and service names may be trademarks or service marks of others. Visit www.lenovo.com/lenovo/us/en/safecomp/ periodically for the latest information on safe and effective computing. ©2019 Lenovo. All rights reserved.



Lenovo™