

ideacentre A540

POWER IN THE BEAUTY.

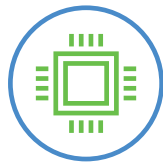
Powerful yet perfectly balanced. Feature-rich yet very practical. The eye-catching IdeaCentre A540 is powered up by 9th Gen Intel® Core™ processors and packs a lot into its space-saving design. Thanks to high-performance processing, rich discrete graphics, and vast storage, it's ideal for multitasking, entertaining, or gaming. You can also log in with just a smile, wirelessly recharge your phone, and physically turn off the webcam. It all goes to show that not all all-in-ones are the same.

WHY YOU SHOULD BUY LENOVO™ IDEACENTRE™ A540



Ground-breaking, jaw-dropping

Form meets function with the space-saving IdeaCentre A540. Inspired by the symmetry of the Cypress tree, the eye-catching All-in-One was designed to be balanced and strong - without ever sacrificing on performance. And just like a Cypress tree, the A540 will make an attractive addition to any home.



Why settle for anything less?

Designed for intense workloads and fast rendering the A540, powered by up to 9th Generation Intel® Core™ i7 processor, handles your most demanding apps which means less idle time and more time for creating.



Lenovo™



Smart and functional

As well as being able to plug earphones and other devices into the stand, you can wirelessly recharge your phone by placing it on the base - even if your AIO is turned off. Thanks to an IR camera and Windows Hello, you can log in with just your smile. And with TrueBlock Privacy Shutter, it's just as easy to turn off/on your webcam.



Immerse yourself

With up to 93% screen-to-body ratio and thin, narrow bezels, the A540 gives you less visual distractions and more to enjoy than a regular 24" display. And to enhance your viewing experience even further, simply opt for a model with QHD resolution. With certified JBL® by Harman speakers and Dolby® premium sound, a truly immersive audio experience awaits you every time on the A540.



WWW.LENOVO.COM



ideacentre A540

SPECIFICATIONS

Lenovo IdeaCentre A540-24ICB*, Lenovo IdeaCentre A540-27ICB*

PERFORMANCE

Processor

Intel® Core™ i7-9700T Processor
Intel® Core™ i5-9400T Processor
Intel® Core™ i3-9100T Processor

Operating System

Windows 10 Pro

Graphics

A540-24ICB
AMD Radeon™ RX 540X Graphics

A540-27ICB
AMD Radeon™ RX 560X Graphics

Camera(s)

FHD Hybrid RGB IR Camera
HD Camera

Microphone

Microphone/Earphone Combo

Audio

2 x 3W Stereo Speaker
1 x 5W Woofer

Memory

DDR4 : 4 GB / 8 GB / 12 GB / 16 GB

Storage

M.2 PCIe SSD: 128 GB / 256 GB / 512 GB / 1 TB
HDD : 1 TB / 2 TB

Power Supply

A540-24ICB
90W / 120W / 150W
A540-27ICB
120W / 150W / 170W

DESIGN

Display

A540-24ICB
23.8" FHD (1920 x 1080) IPS Touchscreen¹
A540-27ICB
27" QHD (2560 x 1440) IPS Touchscreen¹

Dimensions (W x D x H)

A540-24ICB (Touch & Non-touch)
(mm) : 450.9 x 435.19 x 24.92
(inches) : 17.75" x 17.13" x 0.98"

A540-27ICB (Touch)
(mm) : 626.24 x 482.21 x 29.6
(inches) : 24.65" x 18.98" x 1.16"

A540-27ICB (Non-touch)
(mm) : 614.8 x 476.43 x 25.5
(inches) : 24.2" x 18.76" x 1"

Net Weight

A540-24ICB (Touch & Non-touch)
Starting at 15.45 lbs (7.01 kg)

A540-27ICB (Touch)
Starting at 24.18 lbs (10.97 kg)

A540-27ICB (Non-touch)
Starting at 20.12 lbs (9.13 kg)

Colors

A540-24ICB
Industry Black
A540-27ICB
Mineral Grey

CONNECTIVITY

WLAN & Bluetooth*

1 x 1 WiFi 802.11 ac
Bluetooth® 4.2 Combo with WiFi Card

Input/Output (I/O) Ports

A540-24ICB
1 x USB 3.1 Gen 1 (Type-A)²
2 x USB 3.1 Gen 2 (Type-A)³
2 x USB 2.0
3-in-1 Card Reader (SD, SDHC, SDXC)
LAN

Microphone/Earphone Combo
Power DC Jack
HDMI™ - In/Out

A540-27ICB

1 x USB 3.1 Gen 1 (Type-C)²
2 x USB 3.1 Gen 2 (Type-A)³
2 x USB 2.0
3-in-1 Card Reader (SD, SDHC, SDXC)
LAN

Microphone/Earphone Combo
Power DC Jack
HDMI™ - In/Out

PRELOADED SOFTWARE

- Lenovo Vantage
- Microsoft Office 2016

¹ Optional.

² The actual transfer speed of the USB 3.1 Gen 1 will vary and, depending on many factors, such as the processing capability of host and peripheral devices, file attributes and other factors related to system configuration and your operating environments, will be slower than a speed of 5 Gbit/s.

³ The actual transfer speed of the USB 3.1 Gen 2 will vary and, depending on many factors, such as the processing capability of host and peripheral devices, file attributes and other factors related to system configuration and your operating environments, will be slower than a speed of 10 Gbit/s.



LENOVO SERVICES

Warranty Upgrades - On-site / In-Home Service

Maximizes PC uptime and productivity by providing convenient, fast repair services in your own home.

Accidental Damage Protection

Avoid the hassles of unexpected repair costs. Provides coverage for non-warranted damage incurred under normal operating conditions, such as minor spills, drops or damage to the integrated screen.

Warranty Extensions (1-to-3 Years Total Duration)

This fixed-term, fixed-cost service helps accurately budget for PC expenses, protect your valuable investment and potentially lower the cost of ownership over time.

* Specification and configuration may vary by different platform and model.

OPTIONS & ACCESSORIES



Lenovo Professional
Ultraslim Wireless Combo

* Example of Lenovo IdeaCentre AIO catalogue naming convention



Intel® platform codes

Haswell H81: IHH, BroadWell U: IBU, Skylake Z170: ISZ, Skylake B150: ISB, Kabylake: IKL, Skylake H110/H170: ISH, Skylake U: ISU, Apollo Lake: IAP, Kabylake H110: IKH, Coffee Lake B360: ICB, Coffee Lake H: ICH, Coffee Lake Z370 Overclock: ICO



WWW.LENOVO.COM

Lenovo reserves the right to alter product offerings and specifications at any time, without notice. Lenovo makes every effort to ensure accuracy of all information but is not liable or responsible for any editorial, photographic or typographic errors. All images are for illustration purposes only. For full Lenovo product, service and warranty specifications visit www.lenovo.com. Lenovo makes no representations or warranties regarding third party trademarks or services. **Trademarks:** The following are trademarks or registered trademarks of Lenovo: Lenovo, the Lenovo logo, ideapad, IdeaCentre, yoga and yoga logo. Microsoft, Windows and Vista are registered trademarks of Microsoft Corporation. Ultrabook, Celeron, Celeron Inside, Core Inside, Intel, Intel Logo, Intel Atom, Intel Atom Inside, Intel Core, Intel Inside, Intel Inside Logo, Intel vPro, Itanium, Itanium Inside, Pentium, Pentium Inside, vPro Inside, Xeon, Xeon Phi, and Xeon Inside are trademarks of Intel Corporation in the U.S. and/or other countries. Other company, product and service names may be trademarks or service marks of others. Visit www.lenovo.com/lenovo/us/en/safecomp/ periodically for the latest information on safe and effective computing. ©2019 Lenovo. All rights reserved.



Lenovo™