

Lenovo **LEGION** BoostStation



MOBILITY MEETS MIGHTY WITH THE LENOVO LEGION BOOSTSTATION GRAPHICS BOOSTER.

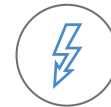
Unlimited power comes optional with the Lenovo™ Legion BoostStation Graphics Booster. This BoostStation dock houses an optional tower-level graphics card of your choosing, then connects to your laptop of choice via Thunderbolt™ 3 for epic frame rates. Further the Lenovo Legion BoostStation delivers expandable 2.5" Storage Bays to house your media libraries with ample I/O to support all your Legion accessories and displays. Just sit down, plug-in and enjoy tower-level battle-station performance from your laptop.

WHY YOU NEED THE LENOVO LEGION BOOSTSTATION



Tower-level graphics

Supporting over 500W of power to your graphics card of choice, the Legion BoostStation Graphics Booster delivers tower-level performance to any Thunderbolt™ 3 supported laptop.



Thunderbolt™ 3 support

Supporting and connecting multiple displays or devices through a single, compact port, Thunderbolt™ 3 lets you enjoy high-performance graphics on the latest thin and light Legion Y740s Laptop with one Thunderbolt™ 3 port and cable.

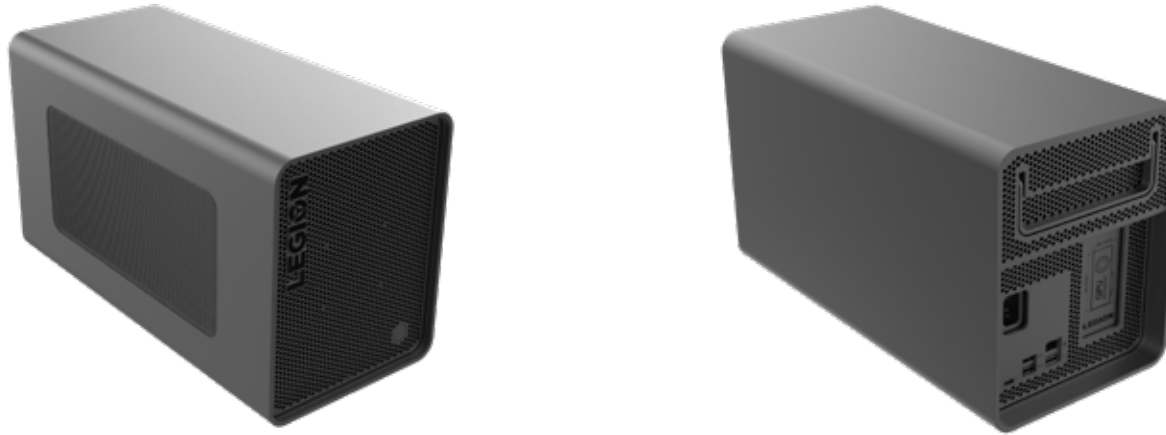


Create your battle-station

Supporting and connecting multiple displays or devices through a single, compact port, Thunderbolt™ 3 lets you enjoy high-performance graphics on the latest thin and light Legion Y740s Laptop or any laptop* with one Thunderbolt™ 3 port and cable.

* Laptop must have compatible Thunderbolt™ 3 Support.

Lenovo **LEGION** BoostStation



SPECIFICATIONS

PERFORMANCE

Bundled Graphic Card Options

NVIDIA® GeForce RTX™ 2060 6 GB
AMD Radeon™ RX 5700 XT

Supported Graphic Cards

NVIDIA® GeForce RTX™ 2080 Super 8 GB
NVIDIA® GeForce RTX™ 2070 Super 8 GB
NVIDIA® GeForce RTX™ 2060 6 GB
NVIDIA® GeForce® GTX 1660 Ti
AMD Radeon™ RX 5700 XT

Storage Slots

1 x 3.5"/2.5" SATA HDD and SATA SSD

Internal Power Supply (PSU)

ATX with Up to 500W

Laptop Power Delivery

Up to 100W via USB-C

VR Support

Supports VR (based on VGA Card Configuration)

DESIGN

Dimensions (W x L x H)

Product Dimension

(mm) : 172 x 365 x 212
(inches) : 6.77" x 14.37" x 8.35"

Graphic Card Dimension

(mm) : 60 x 300/320 x 150¹
(inches) : 2.36" x 11.81"/12.6" x 5.9"

Weight

Less than 18.74 lbs (8.5 kg)

CONNECTIVITY

I/O Ports (Rear)

2 x USB 3.1 Gen 1²
1 x USB 2.0
1 x Thunderbolt™ 3
1 x HDMI™³
1 x RJ45 Ethernet
1 x Microphone
1 x AC-In

¹ 300 mm - Power Pin on Rear,
320 mm - Power Pin on Top,

60 mm & 150 mm - Distance between Top of PCIe Connector to Bottom of Card Locker.

² The actual transfer speed of the USB 3.1 Gen 1 will vary and, depending on many factors, such as the processing capability of host and peripheral devices, file attributes and other factors related to system configuration and your operating environments, will be slower than a speed of 5 Gbit/s.

³ Dependant on graphic card selection.



[ACCESSORYSMARTFIND.LENOVO.COM](https://www.lenovo.com/accessorysmartfind)

Lenovo reserves the right to alter product offerings and specifications at any time, without notice. Lenovo makes every effort to ensure accuracy of all information but is not liable or responsible for any editorial, photographic, or typographic errors. All images are for illustration purposes only. For full Lenovo product, service, and warranty specifications, visit www.lenovo.com. Lenovo makes no representations or warranties regarding third-party products or services. **Trademarks:** The following are trademarks or registered trademarks of Lenovo: Lenovo, the Lenovo logo, Rescue and Recovery, ThinkPad, ThinkCentre, ThinkStation, ThinkServer, ThinkVantage, and ThinkVision. Other company, product, and service names may be trademarks or service marks of others. Battery life (and recharge times) will vary based on many factors, including system settings and usage. Visit www.lenovo.com/lenovo/us/en/safecomp/ periodically for the latest information on safe and effective computing. ©2020 Lenovo. All rights reserved.

Lenovo™