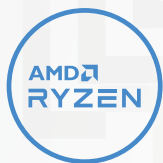


# LEGION 5 (15")

## PURPOSE-BUILT GAMING PERFORMANCE.

Experience today's top AAA games on the Lenovo™ Legion 5. Inside the clean, minimalist chassis of the Legion 5 is everything you ever need to compete on equal footing with the pros, including the latest generation of AMD processing and NVIDIA® GeForce RTX™ graphics for performance that's AI-optimized by the Legion AI Engine powering the revolutionary Legion Coldfront 3.0 and Q Control. Excel across every AAA title with a 15" FHD display at up to 165 Hz refresh rate, featuring 100% sRGB color accuracy and support for Dolby Vision®, as well as the new Nahimic 3D audio and the legendary Legion TrueStrike keyboard so you can strike with pinpoint precision. Enjoy purpose-built performance on the Legion 5, available in Phantom Blue or Stingray White.

### WHY YOU SHOULD BUY THE LENOVO LEGION 5 (15")



#### Escalate your game

Welcome to next-generation gaming with up to 8 high-performance cores in the latest AMD Ryzen™ 7 mobile processors, delivering a combination of lightning-fast frame rates with uncompromised battery life.



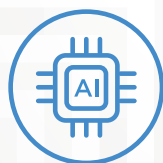
#### RTX. It's On.

Latest generation NVIDIA® GeForce RTX™ graphics bring 2<sup>nd</sup> Generation Ray Tracing, 3<sup>rd</sup> Generation AI Tensor Cores and more for a huge leap in graphical performance.



#### Fast refresh, deep colors

Legion 5 delivers speed and color clarity for full-fidelity gaming. Enjoy up to 165 Hz refresh rate, <3 ms response time and 100% sRGB all on a 15.6" FHD (1920 x 1080) IPS display.



#### Boost framerates with the Lenovo Legion AI Engine

Exclusive to Lenovo Legion laptops, the Lenovo Legion AI Engine, a system of AI solutions, dynamically shifts power between the CPU and GPU for more FPS on today's top AAA titles.



[WWW.LENOVO.COM](http://WWW.LENOVO.COM)



Lenovo™

# LEGION 5 (15")

## SPECIFICATIONS

Lenovo Legion 5 15ACH-06\*

### PERFORMANCE

#### Mobile Processor

Up to latest AMD Ryzen™ 7

#### Operating System

Windows 10 Pro  
Windows 10 Home

#### Graphics

Up to latest NVIDIA® GeForce RTX™

#### Memory

3200 MHz DDR4 : Up to 32 GB

#### Storage

M.2 NVMe PCIe SSD: Up to 2 TB

#### Battery¹

Up to 8 Hours (Target)²;  
7.1 Hours (60 Whr) (Target)²  
Rapid Charge Pro (Supported)³

#### Power Adapter

Starting at 170W Slim Adapter

### DESIGN

#### Display

- 15.6" FHD (1920 x 1080) IPS (165 Hz / <3 ms Response Time⁴ / 100% sRGB / 300 nits / Dolby Vision® Supported)
- 15.6" FHD (1920 x 1080) IPS (120 Hz / 45% NTSC / 250 nits)
- 15.6" FHD (1920 x 1080) IPS (60 Hz / 100% sRGB / 300 nits)

#### Dimensions (W x D x H) (Target)⁵

(mm) : 363.06 x 259.61 x 23.57-26.1  
(inches) : 14.3" x 10.22" x 0.93"-1.03"

#### Weight (Target)⁵

Starting at 2.4 kg (5.3 lbs)

#### Backlit Keyboard

White Backlight  
Blue Backlight⁶  
4-Zone RGB Backlight⁷

#### Colors

Phantom Blue  
Stingray White⁷

### CONNECTIVITY

#### Webcam

Built-in HD Webcam (720p) with E-Shutter

#### WLAN

2x2 WiFi 6 (802.11 ax)

#### Bluetooth®

Bluetooth® 5.1

#### Audio

2 x 2W Harman Kardon® Speakers with Nahimic Audio for Gamers

#### I/O (Input/Output) Ports

##### Left Side

1 x USB Type-C™ (USB 3.2® Gen 2, DisplayPort™ 1.4)  
1 x Audio Jack

##### Right Side

1 x USB 3.2® Gen 1  
1 x System LED  
1 x E-Shutter Button

##### Rear

3 x USB Type-A 3.2® Gen 1  
(1 x Always-On 5V)  
1 x USB Type-C™ (USB 3.2® Gen 2, DisplayPort™ 1.4, Power Delivery)  
1 x HDMI™ 2.1  
1 x RJ45 Ethernet  
1 x DC-In

### PRELOADED SOFTWARE

- Lenovo Vantage
- Lenovo PC Manager
- Lenovo Nerve Center
- McAfee LiveSafe™
- Lenovo Antivirus
- Microsoft Office Trial⁹
- Power2Go



¹ All battery life claims are approximate and based on results using the MobileMark® 2018 v1.0.2.46 battery life benchmark test. Actual battery life will vary and depends on many factors such as product configuration and usage, software use, wireless functionality, power management settings, and screen brightness. The maximum capacity of the battery will decrease with time and use.

² Final battery life to be finalized Spring 2021 or Product SS 2021.

³ 1 hour 0-80%.

⁴ With Overdrive (OD).

⁵ Final product spec info available Spring 2021.

⁶ Available only on Stingray White version.

⁷ Optional.

⁸ The actual transfer speed of the USB 3.2 will vary and, depending on many factors, such as the processing capability of host and peripheral devices, file attributes and other factors related to system configuration and your operating environments, will be slower than a speed of 20 Gbit/s.

⁹ Except Japan, India and China.

## LENOVO SERVICES

#### Warranty Upgrades - On-site / In-Home Service

Maximizes PC uptime and productivity by providing convenient, fast repair services in your own home.

#### Accidental Damage Protection

Avoid the hassles of unexpected repair costs. Provides coverage for non-warranted damage incurred under normal operating conditions, such as minor spills, drops or damage to the integrated screen.

#### Warranty Extensions (1-to-3 Years Total Duration)

This fixed-term, fixed-cost service helps accurately budget for PC expenses, protect your valuable investment and potentially lower the cost of ownership over time.

## OPTIONS & ACCESSORIES



Lenovo Legion  
M300 RGB  
Gaming Mouse



Lenovo Legion  
H300 Stereo Gaming  
Headset



Lenovo Legion  
15.6" Recon Gaming  
Backpack

\* Example of Lenovo catalogue naming convention

Legion	5	15ACH-06
Sub-brand	Position	Screen size or volume (litre) (e.g. API = Picasso)

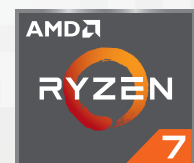
#### AMD platform codes

Bristol Ridge-L: ABL, Beema: ABM, Bristol Ridge: ABR, Carizzo-L: ACL, Carizzo: ACZ, Godavari: AGR, Kaveri: AKV, Stoney Ridge: ASR, Stoney Ridge: AST (NB), Summit Ridge: ASU, Raven Ridge: ARR, Picasso: API, Ryzen: ARE, Dali: ADA, Matisse: ARH, Xxxx: ACH.



WWW.LENOVO.COM

Lenovo reserves the right to alter product offerings and specifications at any time, without notice. Lenovo makes every effort to ensure accuracy of all information but is not liable or responsible for any editorial, photographic or typographic errors. All images are for illustration purposes only. For full Lenovo product, service and warranty specifications visit [www.lenovo.com](http://www.lenovo.com). Lenovo makes no representations or warranties regarding third party products or services. ©2020 Advanced Micro Devices, Inc. All rights reserved. AMD, the AMD Arrow logo, Athlon, Radeon and combinations thereof, are trademarks of Advanced Micro Devices, Inc. Microsoft and Windows are registered trademarks of Microsoft Corporation in the United States and/or other countries. 3DMark is a registered trademark of Futuremark Corporation. Other names are for informational purposes only and may be trademarks of their respective owners. Other company, product and service names may be trademarks or service marks of others. Visit [www.lenovo.com/lenovo/us/en/safecomp/](http://www.lenovo.com/lenovo/us/en/safecomp/) periodically for the latest information on safe and effective computing. ©2020 Lenovo. All rights reserved.



Lenovo™