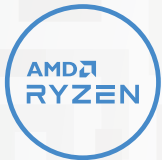


LEGION Slim 7 (15")

LENOVO'S LIGHTEST GAMING LAPTOP WITH NVIDIA® GEFORCE RTX™.

Engineered for those who know gaming is a way of life, the Lenovo™ Legion Slim 7, in Shadow Black, is calibrated for next-gen creation and gaming alike. Redefine gaming experiences with the latest generation AMD processing and NVIDIA® GeForce RTX™ graphics that are AI-optimized via the Legion AI Engine all the while cooled by the Legion Coldfront 3.0's thermal system. The Legion Slim 7's light and exhilarating design is further machined from an Aluminum and Magnesium blend that defies all basic laws of laptop engineering. Relive the glory of cinematic gaming on a 15.6" 4K, Dolby Vision® HDR-supported display with up to 500 nits of screen brightness or crush the competition in FHD at 165 Hz for immersive gaming anywhere life takes you.

WHY YOU SHOULD BUY THE LENOVO LEGION SLIM 7 (15")



Escalate your game

Welcome to next-generation gaming with up to 8 high-performance cores in the AMD Ryzen™ 7 mobile processor, delivering a combination of lightning-fast frame rates with uncompromised battery life.



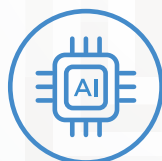
RTX. It's On.

NVIDIA® GeForce RTX™ 30 Series graphics bring 2nd Generation Ray Tracing, 3rd Generation AI Tensor Cores and more for a huge leap in graphical performance.



Uncover hidden worlds

Dominate the competition in FHD at 165 Hz or relive epic gaming moments in 4K at 60 Hz with the Legion Slim 7's high dynamic range 15.6" display with Dolby Vision® support.



Boost framerates with the Lenovo Legion AI Engine

Exclusive to Lenovo Legion laptops, the Lenovo Legion AI Engine, a system of AI solutions, dynamically shifts power between the CPU and GPU for more FPS on today's top AAA titles.



* Images are showing white backlit keyboard, and RGB is optional.



WWW.LENOVO.COM



Lenovo™

LEGION Slim 7 (15")

SPECIFICATIONS

Lenovo Legion S7 15ACH-06*

PERFORMANCE

Processor

Up to AMD Ryzen™ 7

Operating System

Windows 10 Pro
Windows 10 Home

Graphics

Up to NVIDIA® GeForce RTX™ 3060 with Max-Q Design

Memory

3200 MHz DDR4 : Up to 32 GB

Storage

M.2 NVMe PCIe SSD : Up to 2 TB

Battery¹

Up to 8 Hours (Target)²
Rapid Charge Express (Supported)³

Power Adapter

230W Slim Adapter
95W Type-C™ Adapter (Supported)

DESIGN

Display

- 15.6" UHD (3840 x 2160) IPS (60 Hz / 100% Adobe RGB / VESA DisplayHDR™ 400 Certified / Dolby Vision® Supported / 500 nits)
- 15.6" FHD (1920 x 1080) IPS (165 Hz / Up to 3 ms Response Time⁴ / 100% sRGB / Dolby Vision® Supported / 300 nits)

Dimensions (W x D x H) (Target)⁵

(mm) : 356 x 252 x 15.9-18.9
(inches) : 14.02" x 9.92" x 0.6"-0.7"

Weight (Target)⁵

Starting at 1.9 kg (4.2 lbs)

Backlit Keyboard

White Backlight
Corsair® iCUE RGB⁶

Material

Aluminum

Colors

Shadow Black
Storm Grey⁷

Fingerprint Reader

Fingerprint Reader on Power Button

CONNECTIVITY

Webcam

Top-placed Built-in HD Webcam (720p) with Privacy Shutter

WLAN (Target)⁵

Killer™ WiFi AX1650 (2x2)⁶
WiFi 2x2 802.11 ax⁸

Bluetooth⁸

Bluetooth® 5.1

Audio

2 x 2W Harman® Speaker with Nahimic Audio

Input/Output (I/O) Ports

Left Side

1 x 4-in-1 SD Card Reader
1 x Audio Jack

Right Side

2 x USB Type-C™ (DisplayPort™, USB 3.1 Gen 2⁹)

Rear

1 x AC Adapter
2 x USB 3.2¹⁰ Gen 2

PRELOADED SOFTWARE

- Lenovo Vantage
- Dolby Vision®
- Xrite-Pantone Color Management
- McAfee® Antivirus



* Images are showing white backlit keyboard, and RGB is optional.

¹ All battery life claims are approximate and based on results using the MobileMark® 2018 v1.0.2.46 battery life benchmark test. Actual battery life will vary and depends on many factors such as product configuration and usage, software use, wireless functionality, power management settings, and screen brightness. The maximum capacity of the battery will decrease with time and use.

² Final battery life to be finalized Spring 2021 or Product SS 2021.

³ Rapid Charge Express denotes 15 minutes charge time equating to over 3 hours battery recharge.

⁴ With overdrive.

⁵ Final product spec info available Spring 2021.

⁶ Optional.

⁷ PRC only.

⁸ Base.

⁹ The actual transfer speed of the USB 3.1 Gen 2 will vary and, depending on many factors, such as the processing capability of host and peripheral devices, file attributes and other factors related to system configuration and your operating environments, will be slower than a speed of 10 Gbit/s.

¹⁰ The actual transfer speed of the USB 3.2 will vary and, depending on many factors, such as the processing capability of host and peripheral devices, file attributes and other factors related to system configuration and your operating environments, will be slower than a speed of 20 Gbit/s.

LENOVO SERVICES

Warranty Upgrades - On-site / In-Home Service

Maximizes PC uptime and productivity by providing convenient, fast repair services in your own home.

Accidental Damage Protection

Avoid the hassles of unexpected repair costs. Provides coverage for non-warranted damage incurred under normal operating

conditions, such as minor spills, drops or damage to the integrated screen.

Warranty Extensions

(1-to-3 Years Total Duration)

This fixed-term, fixed-cost service helps accurately budget for PC expenses, protect your valuable investment and potentially lower the cost of ownership over time.

OPTIONS & ACCESSORIES



Lenovo Legion
15.6" Recon Gaming
Backpack



Lenovo Legion
H500 Pro 7.1
Surround Sound
Gaming Headset



Lenovo Legion
M500 RGB
Gaming Mouse

* Example of Lenovo catalogue naming convention

Legion
Sub-brand

S7
Position

15ACH-06
Screen size or volume (litre) (e.g. API = Picasso) Platform (e.g. API = Picasso) Generation

AMD platform codes

Bristol Ridge-L: ABL, Beema: ABM, Bristol Ridge: ABR, Carizzo-L: ACL, Carizzo: ACZ, Godavari: AGR, Kaveri: AKV, Stoney Ridge: ASR, Stoney Ridge: AST (NB), Summit Ridge: ASU, Raven Ridge: ARR, Picasso: API, Ryzen: ARE, Dali: ADA, Matisse: ARH, Xxxx: ACH.



WWW.LENOVO.COM

Lenovo reserves the right to alter product offerings and specifications at any time, without notice. Lenovo makes every effort to ensure accuracy of all information but is not liable or responsible for any editorial, photographic or typographic errors. All images are for illustration purposes only. For full Lenovo product, service and warranty specifications visit www.lenovo.com. Lenovo makes no representations or warranties regarding third party products or services. ©2020 Advanced Micro Devices, Inc. All rights reserved. AMD, the AMD Arrow logo, Athlon, Radeon and combinations thereof, are trademarks of Advanced Micro Devices, Inc. Microsoft and Windows are registered trademarks of Microsoft Corporation in the United States and/or other countries. 3DMark is a registered trademark of Futuremark Corporation. Other names are for informational purposes only and may be trademarks of their respective owners. Other company, product and service names may be trademarks or service marks of others. Visit www.lenovo.com/lenovo/us/en/safecomp/ periodically for the latest information on safe and effective computing. ©2020 Lenovo. All rights reserved.



Lenovo™