

tab M7 (3rd GEN)

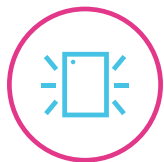
SAY HELLO TO YOUR NEW FAMILY TABLET.

THE NEW 3rd GENERATION 7" TABLET.

Fitted in a clean, compact and classic all-metal casing, the third generation Lenovo™ Tab M7 is now significantly faster and longer lasting than its predecessors, having inherited major performance boosts with the new quad-core processor and faster LPDDR4 RAM. Stream and play all day with a battery that enables up to 12 hours of video on a single charge and up to 30% faster charging speeds.



WHY YOU SHOULD CHOOSE THE LENOVO TAB M7 (3rd GEN)



Premium Metal Cover

Compact and classy with a full metal cover design.



Multi-user Account

Everyone gets a profile with multiple accounts built in.



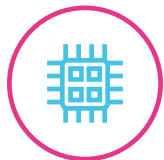
TDDI Display

Vivid 7" IPS display with TDDI technology.



Rapid Charging

Up to 30% faster charge (compared with the previous generation).



Quad-Core Processor

Enhanced chipset performance with fast LPDDR4 RAM.



Built-in kids' mode with Google Kids Space

Quality content to help kids discover, create and grow.*



Comes with Google Entertainment Space

One delightful home for all the entertainment you love.

* Google Kids Space requires a Google Account for your child. Service availability and content may vary.



WWW.LENOVO.COM

TUV-certified eye care



Lenovo™

tab M7 (3rd GEN)

SPECIFICATIONS

DESIGN



Weight

About 236.9 g (0.52 lbs)

Operating System

Android™ 11 (Go Edition)

Display

Size : 7"
Type : IPS
Resolution : 1024 x 600
Screen : TDDI LCD Display
Color Depth : 16.7 M
Brightness : 350 nits (typical value)
Touch : 5-point



Color

Iron Grey



SIM

Type : Nano SIM Card¹
Slot : Single Slot



Integrated Camera

Rear
2 MP Fixed-Focus
Front
2 MP Fixed-Focus



Sensors

Accelerometer (G Sensor)
Vibrator

Login Security

Fingerprint : N/A
Face Unlock : N/A

Buttons and Ports

Volume Up/Down
Power Button
3.5 mm Audio Jack
Micro-USB 2.0
Support T-Hub 2 (OTG / Charging)

PERFORMANCE

Processor

For WiFi SKU: MediaTek® MT8166
For LTE SKU: MediaTek® MT8766
(with 2.0 GHz clock speed)

Audio

Dolby Audio® (1 Microphone)

Speakers

One Speaker

Memory

ROW : 2 GB LPDDR4 + 32 GB EMCP
Card Slot: Expandable microSD™ Card
(exFAT up to 2 TB, FAT32 up to 128 GB)

Battery² (for ROW SKU)

Type : Li-Ion Polymer
Capacity : 3750 mAh
Video Playback Time: Up to 10 Hours
Web Browsing Time: Up to 10 Hours



CONNECTIVITY

Wireless Connectivity

WLAN : WiFi 802.11 a/b/g/n/ac
Bluetooth® : 5.0
WiFi Direct : Yes
WiFi Display: Yes
GPS/Beidou: Yes for GPS
A-GPS : No
FM Radio : Yes
GLONASS : No



Bands Supported

For ROW SKU

GSM : B2/B3/B5/B8
FDD LTE : B1/B2/B3/B4/B5(B19)/B7/B8/
B19/B20/B28(a+b)
TDD LTE : B38/B40/B41³

SOFTWARE

Google Camera Go	Play Store
Google Messages ¹	Google Assistant Go
Google Phone ⁴	Google Clock
Google Contacts	Duo
Gmail	Drive
Google Chrome	Google One
Recorder	Maps
YouTube	Google Play Books
YouTube Music	Google Play Games
Google Gallery Go	Dolby Audio®
Google Calendar	Yandex search ⁵
Google Calculator	Yandex browser ⁵
Google File Go	Tips
Google Kids Space	FM Radio ⁶
Google Entertainment Space	What's New

¹ For LTE SKU only.

² All battery life claims are approximate. Actual battery performance will vary and depend on numerous factors including product configuration and usage, software, operating conditions, wireless functionality, power management settings, screen brightness and other factors. The maximum capacity of the battery will naturally decrease with time and usage.

³ Full bandwidth.

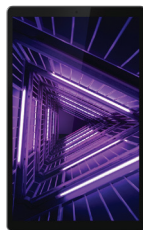
⁴ Voice only.

⁵ RU only.

⁶ Except Japan.

WHAT'S IN THE BOX

- Lenovo Tab M7 (3rd Gen)
- 5V/2A Charging Adapter with Micro-USB 2.0 Charging Cable
- Quick Start Guide
- SIM PIN



ACCESSORIES



Lenovo Kid's Bumper

RECOMMENDED LENOVO SERVICES

Warranty Extensions (1-to-3 Years Total Duration)* The fixed-term, fixed-cost service helps accurately budget for PC expense, protect your valuable investment and potentially lower the cost of ownership.

Accidental Damage Protection* Avoid the hassles of unexpected repair costs. Provides coverage for non-warranted damage incurred under normal operating conditions, such as minor spills, drops or damage to the integrated screen.

* Not available in all countries.

WANT MORE?

Lenovo Tab M10 HD
(2nd Gen)



WWW.LENOVO.COM



Lenovo reserves the right to alter product offerings and specifications at any time, without notice. Lenovo makes every effort to ensure accuracy of all information but is not liable or responsible for any editorial, photographic or typographic errors. All images are for illustration purposes only. For full Lenovo product, service and warranty specifications visit www.lenovo.com. Lenovo makes no representations or warranties regarding third party products or services. **Trademarks:** The following are trademarks or registered trademarks of Lenovo: Lenovo, the Lenovo logo, Yoga. Google and the Google logo are trademarks of Google Inc. Android is a trademark of Google Inc. Ultrabook, Celeron, Celeron Inside, Core Inside, Intel, Intel Logo, Intel Atom, Intel Atom Inside, Intel Core, Intel Inside, Intel Inside Logo, Intel vPro, Itanium, Itanium Inside, Pentium, Pentium Inside, vPro Inside, Xeon, Xeon Phi and Xeon Inside are trademarks of Intel Corporation in the U.S. and/or other countries. Other company, product and service names may be trademarks or service marks of others. Battery life (and recharge times) will vary based on many factors including system settings and usage. ©2021 Lenovo. All rights reserved.

Lenovo™