

# tab M8 (3<sup>rd</sup> GEN)

## THE ENTERTAINMENT TABLET, REVITALIZED.

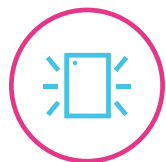
### THE NEW 3<sup>rd</sup> GENERATION 8" TABLET.

The Lenovo Tab M8 (3<sup>rd</sup> Gen) pushes the boundaries of what's possible for tablet-based multimedia entertainment with a stunning 8" TDDI IPS display that features two-sided narrow borders, upgraded octa-core processors and all-day battery life.



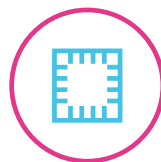
Lenovo

### WHY YOU SHOULD CHOOSE THE LENOVO TAB M8 (3<sup>rd</sup> GEN)



#### Premium Metal Design

Compact and classy with a full metal cover design.



#### Octa-Core Processor

- Fast and powerful with up to 2.3 GHz clock speed.
- Up to 3 GB LPDDR4 RAM.



#### TDDI Display

Vibrant 8" IPS display with TDDI technology.



#### Long Battery Life

- Up to 15 hours of video playback<sup>1</sup>.
- Up to 30% faster charge<sup>2</sup>.



#### Google Kids Space

Built-in kids' mode with Google Kids Space

Quality content to help kids discover, create and grow<sup>3</sup>.



#### Entertainment Space

Comes with Entertainment Space from Google

One delightful home for all the entertainment you love.

<sup>1</sup> All battery life claims are approximate. Actual battery performance will vary and depend on numerous factors including product configuration and usage, software, operating conditions, wireless functionality, power management settings, screen brightness and other factors. The maximum capacity of the battery will naturally decrease with time and usage.

<sup>2</sup> Compared with the previous generation.

<sup>3</sup> Google Kids Space requires a Google Account for your child. Service availability and content may vary.



WWW.LENOVO.COM

# tab M8 (3<sup>rd</sup> GEN)

## SPECIFICATIONS

### DESIGN



#### Weight

About 305 g (0.67 lbs)

### Operating System

For 3 GB RAM: Android™ 11

For 2 GB RAM: Android™ 11 (Go Edition)

### Display

**Size** : 8"  
**Type** : IPS  
**Resolution** : HD (1280 x 800)  
**Screen** : TDDI LCD Display  
**Brightness** : 350 nits  
**Touch** : 10-point Multi-touch

### Colors

Iron Grey  
Platinum Grey

### SIM

**Type**: Nano SIM Card<sup>1</sup>  
**Slot** : Single Slot

### Integrated Camera

**Rear**  
5 MP Auto-Focus  
**Front**  
2 MP Fixed-Focus



### Sensors

Accelerometer (G Sensor)  
Ambient L-Sensor  
P-Sensor  
Vibrator

### Login Security

**Fingerprint** : N/A  
**Face Unlock**: Yes<sup>2</sup>

### Buttons and Ports

Volume Up/Down  
Power Button  
3.5 mm Audio Jack  
USB Type-C™ 2.0

## PERFORMANCE

### Processor

MediaTek® Helio P22T (4 x 2.3 GHz + 4 x 1.8 GHz)

### Audio

Dolby Atmos® (1 Microphone)

### Speakers

1 x Front-Facing Speaker

### Memory

**RAM + ROM** : 2 GB/3 GB + 32 GB (LPDDR4x RAM)  
**Card Slot** : Expandable microSD™ Card  
(exFAT up to 2 TB, FAT32 up to 128 GB)

### Battery<sup>3</sup> (for ROW SKU)

**Type** : Li-Ion Polymer  
**Capacity** : 5100 mAh  
(typical value)

**Video Playback Time** : Up to 15 Hours

**Web Browsing Time** : Up to 18 Hours



## CONNECTIVITY

### Wireless Connectivity

**WLAN** : WiFi 802.11 a/b/g/n, 2.4 GHz & 5 GHz  
**Bluetooth®** : 5.0  
**WiFi Direct** : Yes  
**GPS/Beidou** : Yes  
**A-GPS** : Yes  
**FM Radio** : Yes  
**GLONASS** : Yes



### Bands Supported

#### For ROW SKU

**GSM** : B2/B3/B5/B8  
**WCDMA** : B1/B2/B5(B6/B19)/B8  
**FDD LTE** : B1/B2/B3/B4/B5(B19)/B7/B8/  
B20/B26/B28(a+b)  
**TDD LTE** : B38/B40/B41<sup>4</sup>

#### For PRC SKU

**GSM** : B2/B3/B5/B8  
**WCDMA** : B1/B2/B5/B8  
**TD-SCDMA** : B34/B39  
**FDD LTE** : B1/B3/B5/B7/B8  
**TDD LTE** : B34/B38/B39/B40/  
B41(2545-2655 MHz)

**CDMA/EVDO** : BCO

## SOFTWARE

- Google Entertainment Space
- Google Kids Space
- Google Assistant
- Gmail
- Google Messages
- Google Phone (LTE Voice devices only)
- Google Chrome
- Google Play Music
- Google Photo
- Google Calendar
- Google Search

<sup>1</sup> For LTE SKU only.

<sup>2</sup> For 3 GB RAM SKU with Android™ 11.

<sup>3</sup> All battery life claims are approximate. Actual battery performance will vary and depend on numerous factors including product configuration and usage, software, operating conditions, wireless functionality, power management settings, screen brightness and other factors. The maximum capacity of the battery will naturally decrease with time and usage.

<sup>4</sup> Full bandwidth.

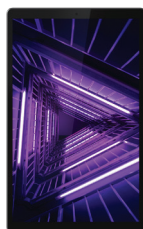
### TUV-certified eye care



Low Blue Light  
Content  
www.tuv.com  
ID 0000056354

## WHAT'S IN THE BOX

- Lenovo Tab M8 (3<sup>rd</sup> Gen)
- 5V/2A Charging Adapter with USB Type-C™ 2.0 Charging Cable
- Quick Start Guide
- SIM PIN



## ACCESSORIES



Lenovo Kid's Bumper



Folio Case

## RECOMMENDED LENOVO SERVICES

**Warranty Extensions (1-to-3 Years Total Duration)\*** The fixed-term, fixed-cost service helps accurately budget for PC expense, protect your valuable investment and potentially lower the cost of ownership.

**Accidental Damage Protection\*** Avoid the hassles of unexpected repair costs. Provides coverage for non-warranted damage incurred under normal operating conditions, such as minor spills, drops or damage to the integrated screen.

\* Not available in all countries.

WANT MORE?

Lenovo Tab M10 HD  
(2<sup>nd</sup> Gen)



WWW.LENOVO.COM



Lenovo reserves the right to alter product offerings and specifications at any time, without notice. Lenovo makes every effort to ensure accuracy of all information but is not liable or responsible for any editorial, photographic or typographic errors. All images are for illustration purposes only. For full Lenovo product, service and warranty specifications visit [www.lenovo.com](http://www.lenovo.com). Lenovo makes no representations or warranties regarding third party products or services. **Trademarks:** The following are trademarks or registered trademarks of Lenovo: Lenovo, the Lenovo logo, Yoga, Google and the Google logo are trademarks of Google Inc. Android is a trademark of Google Inc. Ultrabook, Celeron, Celeron Inside, Core Inside, Intel, Intel Logo, Intel Atom, Intel Atom Inside, Intel Core, Intel Inside, Intel Inside Logo, Intel vPro, Itanium, Itanium Inside, Pentium, Pentium Inside, vPro Inside, Xeon, Xeon Phi and Xeon Inside are trademarks of Intel Corporation in the U.S. and/or other countries. Other company, product and service names may be trademarks or service marks of others. Battery life (and recharge times) will vary based on many factors including system settings and usage. ©2021 Lenovo. All rights reserved.

Lenovo