

LENOVO **ideapad** Duet 5 Chromebook (13", 6)

ULTRA-PORTABILITY NOW COMES WITH OLED BRILLIANCE.

Untether your hybrid life with the world's first detachable Chromebook with OLED display. The thin and light IdeaPad™ Duet 5 Chromebook 13" now packs a brilliant OLED 1920 x 1080 touchscreen featuring narrow bezels for true blacks and a cinematic experience, as well as four speakers for clear and resonant audio. Take this ultimate 2-in-1 device, powered by Chrome OS and cloud computing, to any location and for any mood. Detach the fabric folio keyboard from the chassis while relaxing in your sofa, or put the kickstand up and stay focused with the 15 hours of battery life¹.

WHY YOU SHOULD BUY THE LENOVO IDEAPAD DUET 5 CHROMEBOOK (13", 6)



Dual 2-in-1 ultra-portability

The IdeaPad Duet 5 Chromebook 13" carries on its legacy as the ultimate expression of ultra-portability and versatility with its detachable fabric folio keyboard, stylus support, and ultra-light and slim chassis. Simply detach the screen and enjoy your favorite movies in tablet mode, or transform it into a productivity powerhouse by snapping on its thin, detachable laptop-grade keyboard to help you get work done from the classroom or to the couch. Stay on the move all day and never worry about disruption to your tasks or entertainment on a single charge with the up-to-15-hour life on the 42Wh battery¹. Then charge back up to 80% in just one hour.



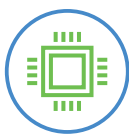
Capture and stream with crystal sound and FHD cameras

Immerse yourself in a cinematic ambience wherever you go with audio that comes through loud and crystal-clear, thanks to the four speakers that feature smart amplifier technology. Record and speak into the two microphones that resonate so well that your friends and family feel close to you hearing your real voice. Show your smile and the real life spinning around you in more details. The 8MP 1080p FHD camera captures images and videos in full high-definition, while the 5MP front-facing camera also offers crisp 1080p FHD resolution for streaming and video calling.



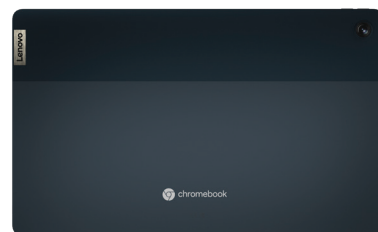
Mesmerizing OLED

No Chromebook is this mesmerizing. With its lightweight Samsung OLED display, the IdeaPad Duet 5 Chromebook's 13.3" Full-HD screen (1920 x 1080) at 400 nits bright is capable of true color via 100% DCI-P3 color gamut. You'll take comfort in the fact that today's OLED display technology emits 70% less blue light to drastically reduce eye strain than current LCD panels and comes certified as an Eye Care Display from the Swiss inspection and testing service provider, SGS™.



Quick, simple and secure

Stay always on and connected with the Qualcomm® Snapdragon™ 7c Gen 2 mobile platform so you can multitask and play mobile games as speedily, simply and securely as possible on the Chrome OS. You'll discover how fast and simple the Chromebook is the very first time you use it. Just login with your Google Account and immediately access all your Google Drive documents and files, as well as your Chrome preferences. Access every app you'll ever need for work, study and entertainment in peace through the Google Play store, optimized for tablets, such as Microsoft Word², Google Docs and Google Meet.



Qualcomm
snapdragon
7c Gen 2
compute platform

¹ Battery life may vary based on device and upon usage and other conditions.

² Additional functionality available with a Microsoft 365 subscription. Microsoft is a registered trademark of Microsoft Corporation.



WWW.LENOVO.COM

Lenovo

LENOVO ideapad Duet 5 Chromebook (13", 6)

SPECIFICATIONS

IdeaPad Duet 5 Chromebook (13", 6)

PERFORMANCE

Processor

Qualcomm® Snapdragon™ 7c Gen 2

Operating System

Chrome OS

Memory

DDR4 : 4 GB / 8 GB

Storage

eMMC : 64 GB / 128 GB / 256 GB

Audio

4 x 1W Stereo Speakers

Battery*

Up to 15 Hours

* Battery life may vary based on device and upon usage and other conditions.

DESIGN

Display

13.3" FHD OLED (1920 x 1080)
100% DCI-P3, 400 nits,
Touchscreen

Dimension (W x D x H)

(mm) : 305.86 x 186.74 x 7.25
(inches) : 12.04" x 7.35" x 0.29"

Net Weight (Tablet only)

Starting at 700 g (1.5 lbs)

Colors

Abyss Blue
Storm Grey

CONNECTIVITY

WLAN & Bluetooth®

WiFi 5 802.11 ac

Bluetooth® 5.1 Combo with WiFi Card

Input/Output (I/O) Ports

2 x USB 3.0 Gen 1 (Type-C™)

Pogo-pin

PRELOADED SOFTWARE

- Google Assistant
- Google Play Store
- Android™ Studio



ABYSS BLUE



STORM GREY



Lenovo

LENOVO SERVICES*

Lenovo Premium Care

Premium Care is the hassle-free solution for all your technical support needs. Upgrade your standard warranty with our front-of-the-queue customer support service and get 24/7 real-person support from experts who provide solutions on your first contact.

Lenovo Smart Performance

Smart Performance Services within Lenovo Vantage will keep your system running at optimum performance and proactively fix issues that affect PC performance, internet performance, and security.

Lenovo Accidental Damage Protection

Avoid the hassles of unexpected damage & repair costs. With coverage for drops, spills, electric surges, and broken LCD screens, accidental damage protection makes it easy to repair to your PCs and ensures your device is up and running fast.

Lenovo Warranty Extensions (1-to-3 Years Duration)

Gain complete peace of mind by extending your warranty to minimize unexpected expenses and repair costs.

* Depend on local availability.

OPTIONS & ACCESSORIES



Lenovo USB-C 3-in-1 Hub



Lenovo 600 Bluetooth® Silent Mouse



Lenovo Urban Sleeve Case 13"



WWW.LENOVO.COM

Lenovo reserves the right to alter product offerings and specifications at any time, without notice. Lenovo makes every effort to ensure accuracy of all information but is not liable or responsible for any editorial, photographic or typographic errors. All images are for illustration purposes only. For full Lenovo product, service and warranty specifications visit www.lenovo.com. Lenovo makes no representations or warranties regarding third party products or services. **Trademarks:** The following are trademarks or registered trademarks of Lenovo: Lenovo, the Lenovo logo, ideapad, IdeaCentre, yoga and yoga home. Microsoft, Windows and Vista are registered trademarks of Microsoft Corporation. Qualcomm Snapdragon is a product of Qualcomm Technologies, Inc. and/or its subsidiaries. Qualcomm and Snapdragon are trademarks of Qualcomm Incorporated, registered in the United States and other countries. Android, Google Play, G Suite and other marks are trademarks of Google LLC. Other company, product and service names may be trademarks or service marks of others. Visit www.lenovo.com/lenovo/us/en/safecomp/ periodically for the latest information on safe and effective computing. ©2021 Maxar Technologies. ©2021 Lenovo. All rights reserved.



Qualcomm
snapdragon
7c Gen 2
compute platform