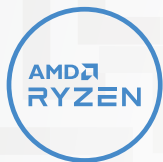


LEGION 5 Pro (16")

CALIBRATED FOR COMPETITION.

Decimate the competition with the latest generation AMD Ryzen™ 6000 Series processors, up to NVIDIA® GeForce RTX™ 3050 Ti (80W) graphics, and the Legion AI Engine designed to auto-detect and auto-optimize your in-game performance, vie for victory and vanquish all foes with the Legion 5 Pro. In stunning and precise WQHD+ (2560 x 1600) with an up-to-240 Hz variable refresh rate display at a massive 16" 16:10 aspect ratio, it's bigger, it's better, and it's born to conquer. And with Legion Coldfront v4.0 thermal technology and a sleek choice between Storm Grey and Cloud Grey, the only decision you'll have left is what color you want your trophy.

WHY YOU SHOULD BUY THE LENOVO LEGION 5 PRO (16")



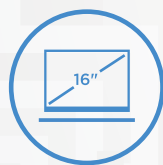
Escalate your game

Speed meets endurance when you play with a gaming laptop powered by AMD Ryzen™ 6000 Series processors. Seize the pure performance you need to win, with longer battery life than ever before.



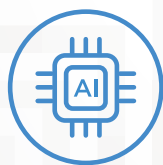
RTX. It's On.

Experience the most realistic gaming experiences with NVIDIA® GeForce RTX™ 30 Series graphics delivering ray tracing and advanced DLSS to your favorite games.



Serious frame advantage

The world's-first 16" WQHD+ (2560 x 1600) display with a 16:10 aspect ratio, up to 240 Hz adaptive refresh rate, AMD FreeSync™ Premium, and TÜV Rheinland certification. Rise fast, rise first, and rank up with the Legion 5 Pro.



Boost framerates with the Lenovo Legion AI Engine

The Lenovo Legion AI Engine's Auto-Optimization mode identifies your game launches and optimizes system performance with dynamic CPU/GPU power distribution to deliver you the highest possible FPS. In Auto-Detect mode, enjoy maximum frame rates on popular AAA titles with custom-tuned profiles. Compete to conquer, compete incredibly.



WWW.LENOVO.COM



Lenovo

LEGION 5 Pro (16")

SPECIFICATIONS

Legion 5P 16ARH7*

PERFORMANCE

Processor

AMD Ryzen™ 7 6800H
AMD Ryzen™ 5 6600H

Operating System

Windows 11 Pro
Windows 11 Home

Graphics

NVIDIA® GeForce RTX™ 3050 Ti; 4 GB GDDR6
(80W TGP, Listed Boost Clock: 1695 MHz)¹

Memory

4800 MHz DDR5 : 16 GB (2 x 8 GB)

Storage

PCIe SSD (Gen 4) : 512 GB / 1 TB

Battery²

80 WHr
> 5 Hours (Target)³
Super Rapid Charge (30 min charge 80%)

Power Adapter

230W Slim Adapter

¹ Supports NVIDIA® Max-Q Technologies: Advanced Optimus, Resizable BAR, Dynamic Boost 2.0.

² All battery life claims are approximate and based on results using the MobileMark® 2018 v1.0.2.46 battery life benchmark test. Actual battery life will vary and depends on many factors such as product configuration and usage, software use, wireless functionality, power management settings, and screen brightness. The maximum capacity of the battery will decrease with time and use.

³ Final battery life to be finalized Spring 2021 or Product SS 2021. Testing conducted by Lenovo. AMD has not independently tested or verified this battery life claim.

⁴ With Overdrive (OD).

⁵ AMD FreeSync™ technology is supported on the built-in laptop panel, which is enabled by the AMD Ryzen™ processor and the AMD Radeon™ driver. Driver update may be required.

⁶ Optional.

⁷ The actual transfer speed of the USB 3.2 will vary and, depending on many factors, such as the processing capability of host and peripheral devices, file attributes and other factors related to system configuration and your operating environments, will be slower than a speed of 20 Gbit/s.

⁸ Except Japan, India and China.

DESIGN

Display

- 16" WQHD+ (2560 x 1600) IPS; 16:10 (165 Hz / 3 ms Response Time⁴ / 100% sRGB / 500 nits); Up to VESA DisplayHDR™ 400 Certified / Dolby Vision® Support / NVIDIA® G-SYNC™ Support / AMD FreeSync™ Premium⁵ / TÜV Rheinland Certified
- 16" WQHD+ (2560 x 1600) IPS; 16:10 (165-240 Hz VRR / 3 ms Response Time⁴ / 100% sRGB / 500 nits); Up to VESA DisplayHDR™ 400 Certified / Dolby Vision® Support / NVIDIA® G-SYNC™ Support / AMD FreeSync™ Premium⁵ / TÜV Rheinland Certified (TBD)
- 16" FHD+ (1920 x 1200) IPS; 16:10 (165 Hz / 3 ms Response Time⁴ / 100% sRGB / 300 nits); Up to VESA DisplayHDR™ 400 Certified / Dolby Vision® Support / NVIDIA® G-SYNC™ Support / AMD FreeSync™ Premium⁵ / TÜV Rheinland Certified

Dimensions (W x D x H)

(mm) : 359.9 x 262.4 x 19.9 - 26.4
(inches) : 14.17" x 10.33" x 0.78" - 1.04"

Weight

Below 2.49 kg (5.49 lbs) (assessment data)

Backlit Keyboard

1.5 mm / Keycap Color / Storm Grey or White (Glacier White) / White Backlight (Storm Grey) / Blue Backlight (Glacier White) / 4-Zone RGB⁶ / 0.3 mm Ditch / 100% Anti-Ghosting / Swappable Keycap

Colors

Storm Grey
Glacier White

CONNECTIVITY

Webcam

Built-in HD Webcam (720p) with E-Shutter

WLAN

2x2 WiFi 6E (802.11 ax)
2x2 WiFi 6 (802.11 ax)⁶
2x2 WiFi 5 (802.11 ac)⁶

Bluetooth⁷

Starting from Bluetooth® 5.1

Audio

2 x 2W Stereo Speakers with Nahimic Audio

I/O (Input/Output) Ports

Left Side

2 x USB Type-C™ (USB 3.2 Gen 2⁷, DisplayPort™ 1.4)

Right Side

1 x USB Type-A 3.2 Gen 1⁷
1 x Audio Combo Jack
1 x E-Shutter Button

Rear

1 x USB Type-A (USB 3.2 Gen 1⁷ Always-On 5V)
1 x USB Type-A (USB 3.2 Gen 1⁷)
1 x USB Type-C™ (USB 3.2 Gen 2⁷, DisplayPort™ 1.4, PD up to 135W)
1 x HDMI™ 2.1
1 x RJ45 Ethernet
1 x DC-In

PRELOADED SOFTWARE

- Lenovo Vantage
- Lenovo PC Manager
- McAfee LiveSafe™
- Lenovo Antivirus
- Microsoft Office Trial⁸
- Power2Go

LENOVO SERVICES

Legion Ultimate Support[®]

Legion Ultimate Support is here to be your META - Most Effective Tactic Available. With one single point of contact, get 24/7 gamer-centric support from a team of IT experts who are gaming specialists and can help optimize your hardware & software settings to keep you productive all day and unbeatable at night.

Lenovo Smart Performance

Smart Performance Services within Lenovo Vantage will keep your system running at optimum performance and proactively fix issues that affect PC performance, internet performance, and security.

Lenovo Accidental Damage Protection

Avoid the hassles of unexpected damage & repair costs. With coverage for drops, spills, electric surges, and broken LCD screens, accidental damage protection makes it easy to repair to your PCs and ensures your device is up and running fast.

Lenovo Warranty Extensions (1-to-3 Years Duration)

Gain complete peace of mind by extending your warranty to minimize unexpected expenses and repair costs.

* Available in NA, CAP, IN, JP only. Not available in EMEA, ANZ, and LAS.

OPTIONS & ACCESSORIES



Lenovo Legion M300s RGB Gaming Mouse



Lenovo Legion H300 Stereo Gaming Headset



Lenovo Legion Active Gaming Backpack

McAfee® LiveSafe™

Register McAfee® to enjoy these benefits in your FREE 30-day trial.

- Award-winning Antivirus
- Multi-device Compatibility
- Password Manager
- Identity Theft Protection
- Safe Web Browsing
- Free Customer Support



WWW.LENOVO.COM

Lenovo reserves the right to alter product offerings and specifications at any time, without notice. Lenovo makes every effort to ensure accuracy of all information but is not liable or responsible for any editorial, photographic or typographic errors. All images are for illustration purposes only. For full Lenovo product, service and warranty specifications visit www.lenovo.com. Lenovo makes no representations or warranties regarding third party products or services. ©2022 Advanced Micro Devices, Inc. All rights reserved. AMD, the AMD Arrow logo, Ryzen, Radeon, FreeSync and combinations thereof, are trademarks of Advanced Micro Devices, Inc. Microsoft and Windows are registered trademarks of Microsoft Corporation in the United States and/or other countries. 3DMark is a registered trademark of Futuremark Corporation. Other names are for informational purposes only and may be trademarks of their respective owners. Other company, product and service names may be trademarks or service marks of others. Visit www.lenovo.com/lenovo/us/en/safecomp/ periodically for the latest information on safe and effective computing. ©2022 Lenovo. All rights reserved.

* Example of Lenovo catalogue naming convention

Legion	5 P	16 ARH7
Sub-brand	Position	Screen size or volume (litre)
		Platform



Lenovo