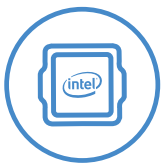


# LEGION 5i (15")

## PURPOSE-BUILT FOR THE PLAYERS.

Geared for gaming, but designed with much more in mind, the Legion 5i is purpose-built to do everything. The thin and light chassis pairs portability and performance, with up to the latest 12<sup>th</sup> Generation Intel® Core™ processors and NVIDIA® GeForce RTX™ 3050 Ti (80W) graphics. Now with Gen 4 PCIe SSD storage and 4800 MHz DDR5 memory, boost your battery life and performance for all-day action at work, at home, or on the go. With an up-to 15.6" WQHD (2560 x 1440) resolution screen at a 165 Hz refresh rate with only 3 ms response time and Legion Coldfront 4.0 cooling technology, you'll be overclocking your game, not your noise. So get better, get balanced, and get gaming.

### WHY YOU SHOULD BUY THE LENOVO LEGION 5i (15")



#### Desktop Caliber Gaming Happens with Intel®

Take a revolutionary leap into real-world hybrid performance with 12<sup>th</sup> Generation Intel® Core™ processors, WiFi 6E and DDR5 memory support.



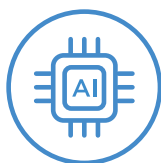
#### Full Powered RTX. It's On.

Experience the most realistic gaming experiences with NVIDIA® GeForce RTX™ 30 Series graphics delivering ray tracing and advanced DLSS to your favorite games.



#### Aim to Game in WQHD

Play with purpose on up to a 15.6" WQHD (2560 x 1440) 165 Hz 3 ms screen, housed in an elegant aluminum and magnesium blended chassis that is 14% thinner than previous generation.



#### AI Enhanced Gaming

The Legion AI Engine leverages AI to custom calibrate your system for the most popular AAA titles, while Legion Coldfront 4.0 deploys advanced thermal technologies to deliver maximum frame rates in stealthy silence.



[WWW.LENOVO.COM](http://WWW.LENOVO.COM)



Lenovo

# LEGION 5i (15")

## SPECIFICATIONS

Legion 5 15IAP7\*

### PERFORMANCE

#### Processor

12<sup>th</sup> Generation Intel® Core™ i7-12700H  
12<sup>th</sup> Generation Intel® Core™ i5-12500H  
12<sup>th</sup> Generation Intel® Core™ i5-12450H

#### Operating System

Windows 11 Pro  
Windows 11 Home

#### Graphics

NVIDIA® GeForce RTX™ 3050 Ti; 4 GB GDDR6  
(80W TGP, Listed Boost Clock: 1695 MHz)<sup>1</sup>  
NVIDIA® GeForce RTX™ 3050; 4 GB GDDR6  
(80W TGP, Listed Boost Clock: 1740 MHz)<sup>1</sup>

#### Memory

4800 MHz DDR5  
8 GB (1 x 8 GB) / 16 GB (2 x 8 GB)

#### Storage

PCIe SSD (Gen 4)  
512 GB / 1 TB

#### Battery<sup>2</sup>

60 WHr / 80 WHr  
> 5 Hours (Target)<sup>3</sup>  
Super Rapid Charge (30 min charge 80%)

#### Power Adapter

230W Slim Adapter

### DESIGN

#### Display

- 15" WQHD (2560 x 1440) IPS; 16:9  
(165 Hz / 3 ms Response Time<sup>4</sup> /  
100% sRGB / 300 nits); Up to VESA  
DisplayHDR™ 400 Certified /  
Dolby Vision® Support /  
NVIDIA® G-SYNC™ Support
- 15" FHD (1920 x 1080) IPS; 16:9  
(165 Hz / 3 ms Response Time<sup>4</sup> /  
100% sRGB / 300 nits); Up to VESA  
DisplayHDR™ 400 Certified /  
Dolby Vision® Support /  
NVIDIA® G-SYNC™ Support
- 15" FHD+ (1920 x 1200) IPS; 16:9  
(144 Hz / 45% NTSC / 350 nits)
- 15" FHD+ (1920 x 1200) IPS; 16:9  
(60 Hz / 100% sRGB / 300 nits)

#### Dimensions (W x D x H)

(mm) : 358.8 x 262.35 x 19.99 - 22.75  
(inches) : 14.13" x 10.33" x 0.79" - 0.9"

#### Weight

< 2.4 kg (5.3 lbs) (Target)

#### Backlit Keyboard

1.5 mm / White Backlight (Storm Grey &  
Cloud Grey) / 4-Zone RGB<sup>5</sup> / 0.3 mm Ditch /  
100% Anti-Ghosting / Swappable Keycap

#### Colors

Storm Grey  
Cloud Grey

### CONNECTIVITY

#### Webcam

Built-in HD Webcam (1080p) / (720p<sup>5</sup>)  
with E-Shutter

#### WLAN

2x2 Intel® WiFi 6E (802.11 ax)  
2x2 Intel® WiFi 6 (802.11 ax)<sup>5</sup>  
2x2 Intel® WiFi 5 (802.11 ac)<sup>5</sup>

#### Bluetooth<sup>6</sup>

Starting from Bluetooth® 5.1

#### Audio

2 x 2W Stereo Speakers with Nahimic Audio

#### I/O (Input/Output) Ports

##### Left Side

1 x Thunderbolt™ 4 (USB 4, DisplayPort™ 1.4)  
1 x USB Type-C™ (USB 3.2 Gen 2<sup>6</sup>,  
DisplayPort™ 1.4)

##### Right Side

1 x USB Type-A 3.2 Gen 1<sup>6</sup>  
1 x Audio Combo Jack  
1 x E-Shutter Button

##### Rear

1 x USB Type-A (USB 3.2 Gen 1<sup>6</sup> Always-On 5V)  
1 x USB Type-A (USB 3.2 Gen 1<sup>6</sup>)  
1 x USB Type-C™ (USB 3.2 Gen 2<sup>6</sup>,  
DisplayPort™ 1.4, PD up to 135W)  
1 x HDMI™ 2.1  
1 x RJ45 Ethernet  
1 x DC-In

<sup>1</sup> Supports NVIDIA® Max-Q Technologies: Advanced Optimus, Resizable BAR, Dynamic Boost 2.0.

<sup>2</sup> All battery life claims are approximate and based on results using the MobileMark® 2018 v1.0.2.46 battery life benchmark test. Actual battery life will vary and depends on many factors such as product configuration and usage, software use, wireless functionality, power management settings, and screen brightness. The maximum capacity of the battery will decrease with time and use. Testing by Lenovo.

<sup>3</sup> Final battery life to be finalized Spring 2021 or Product SS 2021.

<sup>4</sup> With Overdrive (OD).

<sup>5</sup> Optional.

<sup>6</sup> The actual transfer speed of the USB 3.2 will vary and, depending on many factors, such as the processing capability of host and peripheral devices, file attributes and other factors related to system configuration and your operating environments, will be slower than a speed of 20 Gbit/s.

<sup>7</sup> Except Japan, India and China.



## LENOVO SERVICES

### Legion Ultimate Support<sup>7</sup>

Legion Ultimate Support is here to be your META - Most Effective Tactic Available. With one single point of contact, get 24/7 gamer-centric support from a team of IT experts who are gaming specialists and can help optimize your hardware & software settings to keep you productive all day and unbeatable at night.

### Lenovo Smart Performance

Smart Performance Services within Lenovo Vantage will keep your system running at optimum performance and proactively fix issues that affect PC performance, internet performance, and security.

### Lenovo Accidental Damage Protection

Avoid the hassles of unexpected damage & repair costs. With coverage for drops, spills, electric surges, and broken LCD screens, accidental damage protection makes it easy to repair to your PCs and ensures your device is up and running fast.

### Lenovo Warranty Extensions (1-to-3 Years Duration)

Gain complete peace of mind by extending your warranty to minimize unexpected expenses and repair costs.

\* Available in NA, CAP, IN, JP only. Not available in EMEA, ANZ, and LAS.

## OPTIONS & ACCESSORIES



Lenovo Legion  
M300s RGB  
Gaming Mouse



Lenovo Legion  
H300 Stereo  
Gaming Headset



Lenovo Legion  
Active Gaming  
Backpack

## McAfee® LiveSafe™

Register McAfee® to enjoy these benefits in your FREE 30-day trial.

- Award-winning Antivirus
- Multi-device Compatibility
- Password Manager
- Identity Theft Protection
- Safe Web Browsing
- Free Customer Support

\* Example of Lenovo catalogue naming convention



WWW.LENOVO.COM

Lenovo reserves the right to alter product offerings and specifications at any time, without notice. Lenovo makes every effort to ensure accuracy of all information but is not liable or responsible for any editorial, photographic or typographic errors. All images are for illustration purposes only. For full Lenovo product, service and warranty specifications visit [www.lenovo.com](http://www.lenovo.com). Lenovo makes no representations or warranties regarding third party products or services. **Trademarks:** The following are trademarks or registered trademarks of Lenovo: Lenovo, the Lenovo logo, ideapad, IdeaCentre, yoga and yoga home. Microsoft, Windows and Vista are registered trademarks of Microsoft Corporation. Ultrabook, Celeron, Celeron Inside, Core Inside, Intel, Intel Logo, Intel Atom, Intel Atom Inside, Intel Core, Intel Inside Logo, Intel vPro, Itanium, Itanium Inside, Pentium, Pentium Inside, vPro Inside, Xeon, Xeon Phi, and Xeon Inside are trademarks of Intel Corporation in the U.S. and/or other countries. Other company, product and service names may be trademarks or service marks of others. Visit [www.lenovo.com/lenovo/us/en/safecomp/](http://www.lenovo.com/lenovo/us/en/safecomp/) periodically for the latest information on safe and effective computing. ©2022 Lenovo. All rights reserved.



Lenovo