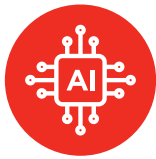


IDEAPAD Pro 5i (16", 8)

The smarter choice for power.

Surpass all performance standards among creators to gamers with the smart and high-powered 13th Gen Intel® Core™ i7 H-Series processors and up to NVIDIA® GeForce RTX™ 4050 graphics, featuring Smart Power from the Lenovo AI Engine to adaptively enhance performance or battery life. Access fast data transfer, power delivery, and display output capabilities through Thunderbolt™ and a range of ports.

Why you should buy Lenovo IdeaPad Pro 5i (16", 8)



Performance for the pros

Go beyond pro-level performance for the gamer and creator in you with smart power. Up to the latest Intel® 13th Gen Core™ i7 H-Series processors and up to NVIDIA® GeForce RTX™ 4050 discrete graphics hand you full rein over your imagination and skills. Let loose your performance with powerful thermal solutions with up to 27% enhancements; Smart Power via the Lenovo AI Engine; and Dynamic Display Switch to boost frame rates through a direct GPU connection.



See more and do more

See more and do more with a large 16" 2.5K display that offers more vertical resolution with a 16:10 aspect ratio and 90% active area ratio. Keep the action smooth and sharper with 120Hz refresh rates and eliminate buffering and lag during the live stream with Lenovo Super Resolution that continuously reduces bandwidth demand. Protect your eyes from strain after a long day of work, streaming, or gaming with TÜV Eyesafe® certification for a low blue light display.



Get stuff done immediately – if not sooner

Get more done – faster – with speedy data transfer and display output capabilities such as up to 40 Gbps bidirectional bandwidth of Thunderbolt™ 4.0 and plenty of ports. Log in quickly and securely with facial recognition from an FHD IR camera equipped with a physical privacy shutter and top up your battery life in 15 minutes with Rapid Charge Express. Work faster and more intuitively with a 20% larger touchpad. And with access to two SSD slots, users can expand their storage as they need.



Fighting fit

Withstand the hard knocks and rough wear of a hectic life on-the-go with a military-grade durable frame that's as resilient as you are. The IdeaPad Pro 5i's chassis has passed some of the most extreme endurance tests, from drops, shocks, sand, and dust to extreme humidities, temperatures, and altitudes.



IDEAPAD Pro 5i (16", 8)

SPECIFICATIONS

IdeaPad Pro 5 16IRH8*

PERFORMANCE

Processor

Intel® Core™ i7-13700H
Intel® Core™ i5-13500H

Operating System

Windows 11 Home

Graphics (Dis)

NVIDIA® GeForce RTX™ 4050 Laptop GPU
NVIDIA® GeForce RTX™ 3050 6 GB Laptop GPU

Memory

LPDDR5 : 16 GB / 32 GB

Storage

PCIe M.2 : 512 GB / 1 TB

Camera & Microphone

IR FHD Camera with ToF Sensor
Privacy Shutter
Dual Microphone Array

Audio

2 x 2W Speakers; Dolby Atmos® Audio

Battery¹

75WHr Polymer

Rapid Charge Express : 15 min. @ 3 Hours (Target)

Dis

MobileMark® 2018 : Up to 7 Hours (Target)

1080p Video Playback : Up to 13 Hours (Target)

DESIGN

Display

16" 2.5K (2560 x 1600) IPS, 120Hz,
16:10, 350 nits, 100% sRGB,
TÜV Low Blue Light Certification

Dimensions (W x D x H)

(mm) : 356 x 251 x as thin as 17.9
(inches) : 14.01" x 9.88" x as thin as 0.70"

Weight

Starting at 1.95 kg (4.30 lbs)

Colors

Arctic Grey
Frost Blue



CONNECTIVITY

WLAN

WiFi 6
WiFi 6E

Bluetooth®

Up to Bluetooth® 5.1

Input/Output (I/O) Ports Left

1 x Thunderbolt™ 4
1 x USB 3.2 Gen 1² Type-C™ (support USB +
Power Delivery + DisplayPort™)
1 x HDMI™ 2.1

Right

2 x USB 3.2 Gen 1² Type-A
1 x SD Card Reader
1 x Audio Jack

PRELOADED SOFTWARE

- Windows 11 Home/Pro
- Lenovo Vantage
- Microsoft 365 Trial
- McAfee® LiveSafe™
- Amazon Alexa

NOTABLE MENTIONS

- ENERGY STAR® 8.0
- EPEAT™ Silver Registered in the US
- MIL-STD-810H Military Test Passed

With Lenovo
AI Engine

¹ All battery life claims are approximate and based on two methods of testing: MobileMark® 2018 battery life benchmark and continuous 1080p video playback on the latest update of Windows 10 (with 150 nits brightness and default volume level). Actual battery life will vary and depends on many factors such as product configuration and usage, software use, wireless functionality, power management settings, and screen brightness. The maximum capacity of the battery will decrease with time and use.

² The actual transfer speed of the USB 3.2 will vary and, depending on many factors, such as the processing capability of host and peripheral devices, file attributes and other factors related to system configuration and your operating environments, will be slower than a speed of 20 Gbit/s.

LENOVO SERVICES

Lenovo Premium Care Plus

Lenovo Premium Care Plus is the ultimate PC support experience with you as our priority 24/7. Enjoy personalized hardware and software support from a global network of elite technicians, along with accidental damage protection, fast repairs with onsite support, extended battery warranty, data migration assistance, and smart performance solutions that optimize PC performance and security.

Lenovo Smart Performance

Smart Performance Services within Lenovo Vantage will keep your system running at optimum performance and proactively fix issues that affect PC performance, internet performance, remove malware, and improve device security.

Lenovo Accidental Damage Protection

Avoid the hassles of unexpected damage & repair costs. With coverage for drops, spills, electric surges, and broken LCD screens, accidental damage protection makes it easy to repair to your PCs and ensures your device is up and running fast.

Lenovo CO₂ Offset Services*

Offset the carbon emissions of your PC with Lenovo CO₂ Offset Services – an easy and transparent solution to offset emissions across the average lifecycle of your device. These offsets are invested in UN-approved initiatives like renewable energy or ecological projects, thus contributing towards a more sustainable future.

Lenovo Sealed Battery Warranty

Long-lasting battery life is not just a feature but a necessity to help you stay productive and connected all day long. Protect your PC's sealed battery from degradation, enjoy hassle-free battery replacement service, and safeguard your PC from future battery failure with our Sealed Battery Warranty Service.

Lenovo Warranty Extensions (Up to 3 Years Duration)

Gain complete peace of mind by extending your base warranty to up to 3 years and minimize unexpected repair costs.

* Optional.

OPTIONS & ACCESSORIES



Lenovo 530
Wireless Mouse



Lenovo 15.6"
Laptop Urban
Backpack B530



Lenovo 110
USB Stereo
Headset

McAfee® LiveSafe™

Register McAfee® to enjoy these benefits in your FREE 30-day trial.

- Award-winning Antivirus
- Password Manager
- Safe Web Browsing
- Multi-device Compatibility
- Identity Theft Protection
- Free Customer Support

* Example of Lenovo catalogue naming convention

IdeaPad	Pro	5	1	6	I	R	H	8
Sub-brand	Form Factor	Processing	Screen Size	Platform Code	Generation			

Intel® platform codes

Gemini Lake: IGM, Whiskey Lake: IWL, Ice Lake: IIL, Gemini Lake: IGL, Comet Lake: IML, Tiger Lake: ITL, Alder Lake: IAP, Alder Lake-HX: IAX, Alder Lake-U15: IAU, Alder Lake-P28: IAP, Alder Lake-P28/U15: IAL, Alder Lake-H45: IAH, Alder Lake N: IAN, Raptor Lake-PX: IRP, Raptor Lake-H: IRH, Raptor Lake-HX: IRX, Alder Lake-M U9: IAM, Raptor Lake U: IRU, Meteor Lake P: IMP, Raptor Lake-P: IRP, Raptor Lake-P28/U15: IRL, Raptor Lake-B: IRB, Raptor Lake-B: IRZ.

WWW.LENOVO.COM

Lenovo reserves the right to alter product offerings and specifications at any time, without notice. Lenovo makes every effort to ensure accuracy of all information but is not liable or responsible for any editorial, photographic or typographic errors. All images are for illustration purposes only. For full Lenovo product, service and warranty specifications visit www.lenovo.com. Lenovo makes no representations or warranties regarding third party products or services. **Trademarks:** The following are trademarks or registered trademarks of Lenovo: Lenovo, the Lenovo logo, ideapad, IdeaCentre, yoga and yoga home. Microsoft, Windows and Vista are registered trademarks of Microsoft Corporation. Ultrabook, Celeron, Celeron Inside, Core Inside, Intel, Intel Logo, Intel Atom, Intel Atom Inside, Intel Core, Intel Inside, Intel Inside Logo, Intel vPro, Itanium, Itanium Inside, Pentium, Pentium Inside, vPro Inside, Xeon, Xeon Phi, and Xeon Inside are trademarks of Intel Corporation in the U.S. and/or other countries. Other company, product and service names may be trademarks or service marks of others. Visit www.lenovo.com/lenovo/us/en/safecom/ periodically for the latest information on safe and effective computing. ©2022 Lenovo. All rights reserved.



Lenovo