

# It matters how you deliver business productivity

ThinkCentre neo 50q Gen 4  
1L Ultra-small Form Factor Desktops

(Pre-release version for CES 2023)

ThinkCentre<sup>NEO</sup>



Powered by  
13<sup>th</sup> Gen Intel® Core™ i5 processor



\*Images and specifications are subject to change  
\*Image shown is for a full version PC

Smarter  
technology  
for all

Lenovo

## COMPACT YET POWERFUL TO HANDLE ANYTHING

The advent of new processing platforms has pushed the desktop market into interesting, ever-shrinking dimensions. As a result, devices shrink with every generation and still have the power to deliver the performance that businesses require. Introducing ThinkCentre neo 50q, a tiny form factor desktop for businesses. Built on the latest 13<sup>th</sup> Gen Intel® Core™ i processors, it pairs perfectly with most business needs – from data crunching to more everyday tasks.

### STAND OUT FROM THE REST

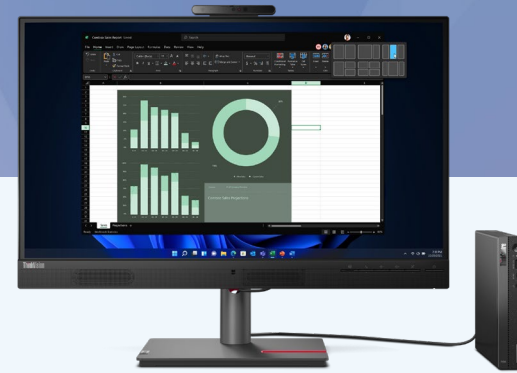
**Essential business productivity:** device performance matters in business, but the space a device takes up is equally important, especially in small businesses where space is at a premium. ThinkCentre neo 50q meets these demands with the all-new up to **13<sup>th</sup> Gen Intel® Core™ i5 H-series mobile processor** in a tiny **1L form factor**. Connectivity is improved too, with multiple USB ports, HDMI, audio, and LAN ports. The **BTB punch-out<sup>1</sup>** option lets users choose a custom port for an extra DP, VGA, or COM ports as needed. While ThinkCentre neo 50q is available with a **full Windows PC**, the Thin Client features a virtual system with **Windows 10 IoT, Linux-based IGEL**, and **LeTOS OS**. It helps businesses and enterprises to simplify their workspaces while supporting immersive, productive user experiences in today's work environments.

**Robust memory:** a powerful, fast device is vital for businesses. Downtime can negatively affect its perception among clients and employees too. ThinkCentre neo 50q features up to 1TB blazing-fast SSD storage, paired with up to 1TB HDD storage too, so space is never an issue. Up to **32GB of DDR4 SODIMM memory<sup>2</sup>** ensures the system starts smoothly and quickly. Apps open near-instantaneously, relieving the frustration of slow starts and endless waiting for app launches.

**Extensive security:** security is paramount for modern devices. ThinkCentre neo 50q addresses this with robust round-the-clock security. **ThinkShield** is a comprehensive suite of security features that keep business devices protected from the chip and BIOS level to every endpoint deployed. ThinkShield covers hardware, software, network & connectivity, location, and more under its protective umbrella. Besides protecting physical security, ThinkShield includes device backup & recovery, remote management, and more in a modular, easily deployable version compatible with all Lenovo devices.



Powered by  
13<sup>th</sup> Gen Intel® Core™ i5 processor



Lenovo

**For eco-conscious businesses:** sustainability is a keyword for businesses, especially in terms of longevity. The chassis on the ThinkCentre neo 50q is made of Post-Consumer Recycled Content and low Halogen inclusion in its construction. It also carries numerous eco-friendly certifications, such as **Energy Star® 8.0, EPEAT™ Gold, TCO 9.0, TÜV Ultra Low Noise, GreenGuard/VOC certification, ErP Lot3**, and more. Overall, ThinkCentre neo 50q leaves a smaller carbon footprint in terms of size and environmental impact. ThinkCentre neo 50q features a front bezel with hidden ventilation.

### WHY BUY THE THINKCENTRE NEO 50q GEN 4

**Space-saving and cost-saving:** ThinkCentre neo 50q delivers an impeccable productivity experience, without negatively impacting office space or business overheads. Its Tiny form factor takes up little room with its **1L size**. It is also competitively priced, making it suited for startups and small and medium businesses.

**Flexibility:** ThinkCentre neo 50q is an incredibly versatile device. Its powerful processor handles complex and volume-heavy tasks with ease. Additionally, its plethora of ports allows it to work in multiple dimensions – making presentations, showcasing visual work, connecting to other devices, and securely transferring data. Additionally, the optional BTB port<sup>1</sup> lets purchasers decide on an extra port, customizing it to their needs. **Wi-Fi 6** makes connecting with teams and clients a hassle-free experience and allows large data transfers across the internet.

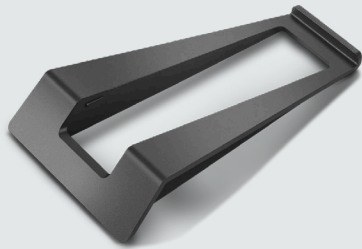
**Purposeful:** there are two variants of ThinkCentre neo 50q - the PC Variant and Thin Client. The PC variant runs on a full-fledged Windows platform for easy deployment for businesses. Thin Client, however, is secure & scalable, a virtual or cloud-based desktop that can be deployed as needed, running on three operating platforms for different needs: Windows-based Win10 IoT OS, Linux-based LeTOS OS, and next-generation Linux-based IGEL OS.

<sup>1</sup>Available only on ThinkCentre neo 50q PC variant

<sup>2</sup>Up to 16GB DDR4, 256GB SSD for Thin Client variant. The Thin Client variant doesn't offer HDD feature.

\*Images and specifications are subject to change

RECOMMENDED ACCESSORIES



**VERTICAL STAND**  
PN: SM10Z42055

This innovative, elegant stand is designed with a small dip angle in front for ease of use. The Vertical Stand also minimizes vibration and noise while maximizing thermal performance.



**THINKCENTRE TINY POWER CAGE II**  
PN: 4XHON23158

ThinkCentre Tiny Power Cage II is a mounting solution that provides an efficient and secure Power adapter mounting solution for your Tiny PC.



**THINKCENTRE TINY VESA MOUNT II**  
PN: 4XFON03161

The ThinkCentre Tiny VESA Mount II is uniquely designed to house the ThinkCentre neo 50q. This versatile mount device can be used separately or combined with other options for a secure mounting functionality.

# COMPACT YET POWERFUL TO HANDLE ANYTHING

## PERFORMANCE

### Processor

Up to 13<sup>th</sup> Gen Intel® Core™ i5 processor

### Operating System

Windows 11 Pro  
Windows 11 Home  
Windows 10 IoT OS  
Linux-based IGEL OS  
LeTOS OS

### Memory

Up to 32GB DDR4, 2 x SODIMM  
Up to 16GB DDR4, 1 x SODIMM

### Storage

Up to 1TB SSD  
Up to 1TB HDD (7200 RPM)

### Graphics

Intel® Iris X<sup>e</sup> Graphics

### PSU

65W<sup>1</sup> / 90W Adaptor

## CONNECTIVITY

### WLAN

Up to Wi-Fi 6  
Bluetooth® 5.1

### Front I/O Ports

1 x USB 3.2 Gen2  
1 x Type C USB 3.2 Gen2  
1 x Combo Audio

### Rear I/O Ports

1 x LAN (RJ45)  
2 x USB 3.2 Gen1  
2 x USB 2.0  
1 x HDMI 2.1 TMDS  
1 x DP 1.4b  
1 x BTB punch-out port<sup>2</sup>

### Expansion Slot

1 x 2.5" HDD Bay

### Internal Bay

1 x SATA 3.0

## DESIGN

### Form Factor

1 Liter Ultra-small Form Factor

### Dimensions (L x W x T)

182.9 x 179 x 34.5mm  
7.20 x 7.04 x 1.35 inches

### Weight

1.11kg/2.45lbs.

### Color

Raven Black with Terrazzo Exterior

## SECURITY

ThinkShield Security Suite  
TPM 2.0 firmware  
Kensington® Security Slot™  
Hard Disk Password  
Secure Wipe  
Boot Sequence Control  
Cover presence switch  
Smart USB Protection  
Individual USB port disablement

## SOFTWARE

Lenovo Vantage  
Lenovo Smart Storage  
MS Office (Trial)  
McAfee Livesafe (Trial)  
Kaspersky®

## CERTIFICATION

Energy Star® 8.0  
EPEAT™ Gold  
TCO 9.0  
TÜV Ultra Low Noise  
RoHS  
ErP Lot3  
GreenGuard/VOC  
Low Halogen

## RECOMMENDED SERVICES

Lenovo offers a comprehensive portfolio of services to support and protect your investment—so you can focus on your work, not your IT. Our portfolio of services supports the full lifecycle of your Lenovo IT assets. From initial strategic planning to customized configuration, deployment, support, protection, security, and asset recovery—Lenovo has solutions to help you embrace new workplace technologies.

## Premier Support

No matter where you or your employees are located, you have direct, 24x7x365 access to elite Lenovo engineers, unscripted troubleshooting, comprehensive hardware, and OEM software support, priority on service delivery, repair parts, and more.

## Lenovo Device as a Service

Combine hardware, services, and software into a single, flexible solution to maintain predictable monthly costs. This innovative, fully managed model drives down capital IT expenses while ensuring your employees experience the latest technology to keep them secure and productive.

## Warranty Extension (1-year base, up to 4 years)

This fixed-term, fixed-cost service helps you accurately budget for desktop expenses, protect your valuable investment, and lower the cost of ownership over time.

## Lenovo CO<sub>2</sub> Offset Service

Make offsetting carbon emissions simple and within your control. You can use this service to compensate for environmental impact based on realistic emissions over an average product lifecycle. It is offered as an option at point of purchase, with tangible proof of CO<sub>2</sub> emission that offset.



Powered by  
13<sup>th</sup> Gen Intel® Core™ i5 processor



<sup>1</sup>65W adapter for ThinkCentre neo 50q Thin Client Variant  
<sup>2</sup>Available only on ThinkCentre neo 50q PC variant

**This datasheet is created for CES 2023.  
Images, specs may change until final release.**

Depending on many factors such as the processing capability of peripheral devices, file attributes, and other factors related to system configuration and operating environments, the actual transfer rate using the various USB connectors on this device will vary and is typically slower than the data rates as defined by the respective USB specifications: - 5 Gbit/s for USB 3.1 Gen1; 10 Gbit/s for USB 3.1 Gen2 & 20 Gbit/s for USB 3.2.

©2023 Lenovo. All rights reserved. Depending on many factors such as the processing capability of peripheral devices, file attributes, and other factors related to system configuration and operating environments, the actual transfer rate using the various USB connectors on this device will vary and is typically slower than the data rates as defined by the respective USB specifications: - 5 Gbit/s for USB 3.1 Gen1; 10 Gbit/s for USB 3.1 Gen2 & 20 Gbit/s for USB 3.2. These products are available while supplies last. Prices shown are subject to change without notice. For any questions concerning price, please contact your Lenovo Account Executive. Lenovo is not responsible for photographic or typographic errors. Warranty: For a copy of applicable warranties, write to: Warranty Information, 500 Park Offices Drive, RTP, NC 27709, Attn: Dept. ZPYA/B600. Lenovo makes no representation or warranty regarding third-party products or services. Trademarks: Lenovo, the Lenovo logo, Rescue and Recovery, ThinkPad, ThinkCentre, ThinkStation, ThinkVantage, and ThinkVision are trademarks or registered trademarks of Lenovo. Microsoft, Windows, and Vista are registered trademarks of Microsoft Corporation. Intel, the Intel logo, Intel Inside, Intel Core, and Core Inside are trademarks of Intel Corporation in the U.S. and/or other countries. Other company, product and service names may be trademarks or service marks of others.