

# YOGA 9i (14", 8)

## Shape your creativity.

The Lenovo Yoga 9i with comfort edge design for a more ergonomic grip with four modes is crafted to be held and marveled. While creating to your heart's desire, or just being content on the sofa surfing the display, the sound and versatility of this device will entertain and astound you.

### Why you should buy the Lenovo Yoga 9i (14", 8)



#### Engineered to do it all – that's a laptop evolved

Yoga 9i featuring 13<sup>th</sup> Gen Intel® Core™ processors that extend beyond performance to let your PC do even more at once. This Intel® Evo™ platform standard thin & light laptop delivers a premium mobile experience for multitasking creatively while minimizing the impact on responsiveness, battery life, or connectivity.



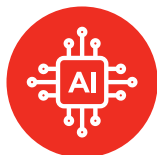
#### Aesthetics you can feel

Ergonomics meet aesthetics in the comfort-edge design of the Yoga 9i Gen 8 convertible laptop. With its rounded finish, it's easy to grip, carry, and use while you're on-the-go. It also boasts time saving one-click function keys, a full-size stylus pen that offers superior tilt capabilities and touchscreen functionality with plenty of ports, including two USB-C Thunderbolt™ 4.



#### Unparalleled entertainment experience

Entertainment never sounded and looked so good. With sound powered by four Bowers & Wilkins speakers, the Lenovo Yoga 9i Gen 8 has Dolby Atmos® on a 360° rotating soundbar putting you at the heart of the action. What's more, with up to 4K resolution on an OLED PureSight display and Dolby Vision®, you can enjoy the ultimate viewing experience.



#### Naturally intuitive

Firing up and using the Yoga 9i Gen 8 laptop is a cinch with the smart facial recognition on the hybrid FHD and infrared camera. Smart facial recognition technology gives you quick, easy, and secure access, while the privacy shutter enables you to physically close the webcam. All the while, 28W Thermal Design Power is paired with Smart Power to optimize battery life and keep the system running cool and quiet.



Now featuring 13<sup>th</sup> Gen Intel® Core™ processors - that extend beyond performance. This Intel® Evo™ platform standard thin & light convertible laptop delivers a premium mobile experience for multi-tasking creatively while minimizing impact to responsiveness, battery life, or connectivity.



# YOGA 9i (14", 8)

## SPECIFICATIONS

Yoga 9 14IRP8\*

### PERFORMANCE

#### Processor

13<sup>th</sup> Gen Intel® Core™ i7 - P28

#### Operating System

Windows 11 Home  
Windows 11 Pro

#### Graphics

UMA : Intel® Iris® X<sup>e</sup>

#### Memory

LPDDR5 : 16 GB; 5200 MHz

#### Storage

PCIe SSD Gen 4 M.2 : 512 GB / 1 TB

#### Camera

FHD 2M + IR Hybrid

Camera Shutter

Resolution : 2.0M

Framerate : 30fps Max

#### Audio

Bowers & Wilkins Speakers

2.2 Channel Speaker

#### Battery<sup>1</sup>

75Whr

MobileMark® 2018 : Up to 10 hours

Local Video Playback : Up to 14 hours

### DESIGN

#### Display

14" 4K OLED (3840 x 2400) IPS, 400 nits, 100% DCI-P3, 60 Hz, 16:10 (WQUXGA), VESA Certified DisplayHDR™ True Black 500, Dolby Vision®, Touchscreen, PureSight  
14" 2.8K OLED (2880 x 1800) IPS, 400 nits, 100% DCI-P3, 60 Hz, 16:10 (WQHD+), VESA Certified DisplayHDR™ True Black 500, Dolby Vision®, Touchscreen, PureSight

#### 4-Side Narrow Bezel (91% AAR)

Top : 6.0 mm

Left/Right : 2.9 mm

Bottom : 10.9 mm

#### Dimensions (W x D x H)<sup>2</sup>

(mm) : 318 x 230 x 15.25 - 16.5

(inches) : 12.52" x 9.06" x 0.60" - 0.65"

#### Weight

Starting from 1.4 kg (3.08 lbs)

#### Hinge

360°

#### Colors

Storm Grey

Oatmeal

### CONNECTIVITY

#### WLAN

WiFi 6E<sup>3</sup>

#### Bluetooth®

Bluetooth® 5.2

#### Input/Output (I/O) Ports

##### Left

2 x USB Type-C™ (Thunderbolt™ 4.0 / DP / PD / USB 3.2<sup>4</sup> Full-function)

1 x USB Type-A Gen 3.2<sup>4</sup>

##### Right

1 x USB Type-C™ (USB 3.2<sup>4</sup> Full-function)

1 x Audio Combo Jack

1 x Power Button

### PRELOADED SOFTWARE

- Windows 11 Home/Pro
- Lenovo Vantage
- Microsoft Office 365 Trial
- McAfee® LiveSafe™
- Amazon Alexa<sup>3</sup>
- Dolby® Access (Dolby Vision® and Atmos®)

### NOTABLE MENTIONS

#### Standard

Sleeve in Box

Precision Pen 2

MIL-STD 810H Certified

#### Optional

USB-C Adapter (3-in-1 Dongle, VGA/HDMI/USB-A)

CO<sub>2</sub> Offset Service

<sup>1</sup> All battery life claims are approximate and based on two methods of testing: MobileMark® 2018 battery life benchmark and continuous 1080p video playback on the latest update of Windows 11 (with 150 nits brightness and default volume level). Actual battery life will vary and depends on many factors such as product configuration and usage, software use, wireless functionality, power management settings, and screen brightness. The maximum capacity of the battery will decrease with time and use.

<sup>2</sup> Height is calculated using T2 measurements and should be considered 'as thin as'.

<sup>3</sup> Available in select regions.

<sup>4</sup> The actual transfer speed of the USB 3.2 will vary and, depending on many factors, such as the processing capability of host and peripheral devices, file attributes and other factors related to system configuration and your operating environments, may be slower than a speed of 20 Gbit/s.

With Lenovo  
**AI Engine+**



## LENOVO SERVICES

#### Lenovo Premium Care Plus

Lenovo Premium Care Plus is the ultimate PC support experience with you as our priority 24/7. Enjoy personalized hardware and software support from a global network of elite technicians, along with accidental damage protection, fast repairs with onsite support, extended battery warranty, data migration assistance, and smart performance solutions that optimize PC performance and security.

#### Lenovo Smart Performance

Smart Performance Services within Lenovo Vantage will keep your system running at optimum performance and proactively fix issues that affect PC performance, internet performance, remove malware, and improve device security.

#### Lenovo Accidental Damage Protection

Avoid the hassles of unexpected damage & repair costs. With coverage for drops, spills, electric surges, and broken LCD screens, accidental damage protection makes it easy to repair to your PCs and ensures your device is up and running fast.

#### Lenovo CO<sub>2</sub> Offset Services

Offset the carbon emissions of your PC with Lenovo CO<sub>2</sub> Offset Services - an easy and transparent solution to offset emissions across the average lifecycle of your device. These offsets are invested in UN-approved initiatives like renewable energy or ecological projects, thus contributing towards a more sustainable future.

#### Lenovo Sealed Battery Warranty

Long-lasting battery life is not just a feature but a necessity to help you stay productive and connected all day long. Protect your PC's sealed battery from degradation, enjoy hassle-free battery replacement service, and safeguard your PC from future battery failure with our Sealed Battery Warranty Service.

#### Lenovo Warranty Extensions (Up to 3 Years Duration)

Gain complete peace of mind by extending your base warranty to up to 3 years and minimize unexpected repair costs.

## OPTIONS & ACCESSORIES



Yoga 9i Keyboard Cover



Lenovo Yoga ANC Headphone



Lenovo Yoga Mouse with Laser Presenter

### McAfee® LiveSafe™

Register McAfee® to enjoy these benefits in your FREE 30-day trial.

- Award-winning Antivirus
- Password Manager
- Safe Web Browsing
- Multi-device Compatibility
- Identity Theft Protection
- Free Customer Support

\* Example of Lenovo catalogue naming convention

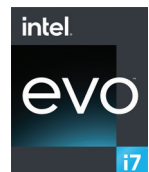
Yoga 9 14 I R P 8  
Sub-brand Positioning Screen Size Platform Code Generation

#### Intel® platform codes

Gemini Lake: IGM, Whiskey Lake: IWL, Ice Lake: IIL, Gemini Lake: IGL, Comet Lake: IML, Tiger Lake: ITL, Alder Lake: IAP, Alder Lake-HX: IAX, Alder Lake-U15: IAU, Alder Lake-P28: IAP, Alder Lake-P28/U15: IAL, Alder Lake-H45: IAH, Alder Lake N: IAN, Raptor Lake-PX: IRP, Raptor Lake-H: IRH, Raptor Lake-HX: IRX, Alder Lake-M U9: IAM, Raptor Lake U: IRU, Meteor Lake P: IMP, Raptor Lake-P: IRP, Raptor Lake-P28/U15: IRL, Raptor Lake-B: IRB, Raptor Lake-B: IRZ.

## WWW.LENOVO.COM

Lenovo reserves the right to alter product offerings and specifications at any time, without notice. Lenovo makes every effort to ensure accuracy of all information but is not liable or responsible for any editorial, photographic or typographic errors. All images are for illustration purposes only. For full Lenovo product, service and warranty specifications visit [www.lenovo.com](http://www.lenovo.com). Lenovo makes no representations or warranties regarding third party products or services. **Trademarks:** The following are trademarks or registered trademarks of Lenovo: Lenovo, the Lenovo logo, ideapad, IdeaCentre, yoga and yoga home. Microsoft, Windows and Vista are registered trademarks of Microsoft Corporation. Qualcomm Snapdragon is a product of Qualcomm Technologies, Inc. and/or its subsidiaries. Qualcomm and Snapdragon are trademarks of Qualcomm Incorporated, registered in the United States and other countries. Google, Chrome, and Chromebook are trademarks of Google LLC. Netflix is a registered trademark of Netflix, Inc. Other company, product and service names may be trademarks or service marks of others. Visit [www.lenovo.com/lenovo/us/en/safecomp/](http://www.lenovo.com/lenovo/us/en/safecomp/) periodically for the latest information on safe and effective computing. ©2022 Lenovo. All rights reserved.



Lenovo